

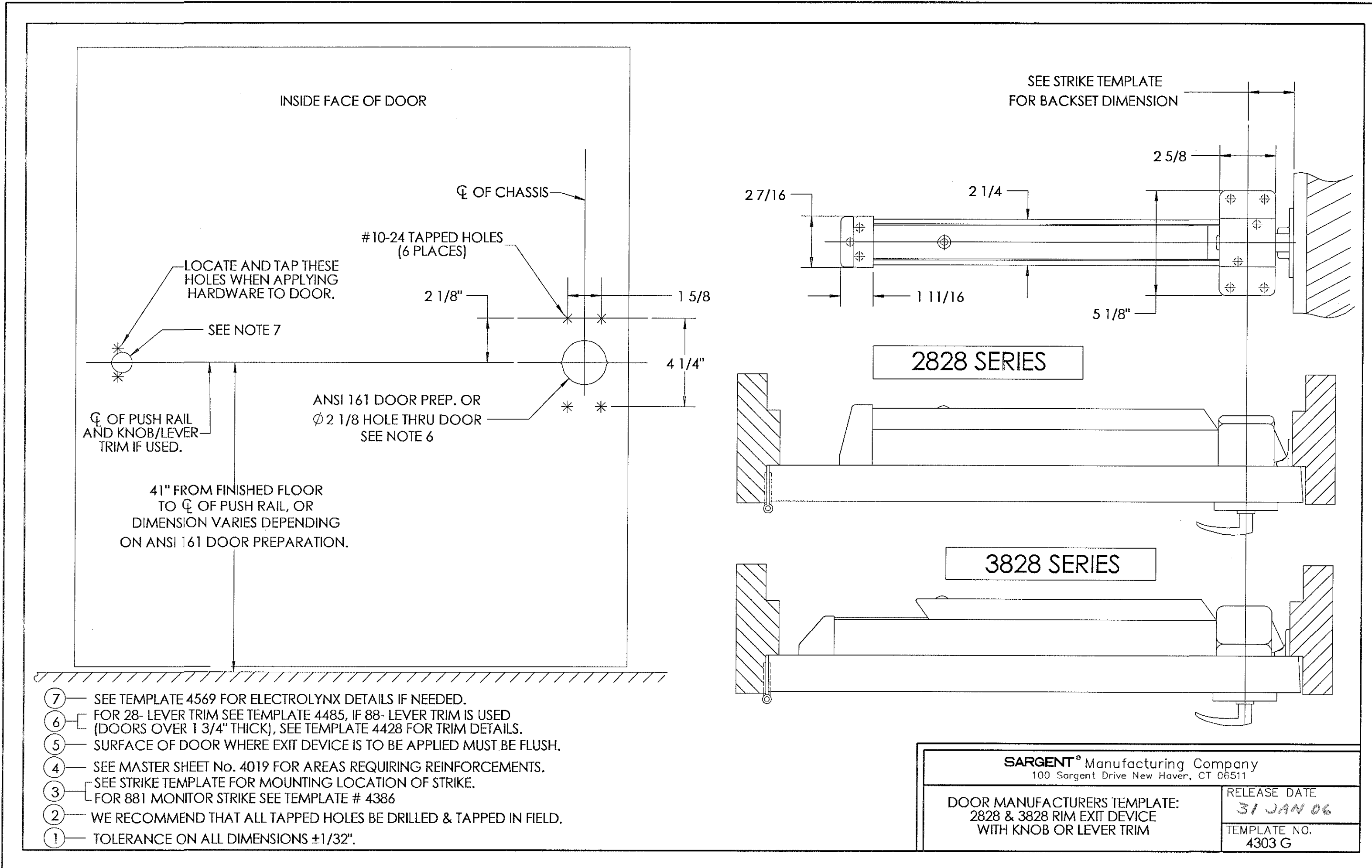
4

3

2

1

REVISION HISTORY				
ZONE	REV.	DESCRIPTION	NAME/DATE	APPD/DATE
	G	REDRAWN WITH CHANGE PER PCP 04-382 ADDED NOTES 6 & 7	8/12/2004	<i>CEA</i> 1/23/06



- ⑦ — SEE TEMPLATE 4569 FOR ELECTROLYNX DETAILS IF NEEDED.
- ⑥ — FOR 28- LEVER TRIM SEE TEMPLATE 4485, IF 88- LEVER TRIM IS USED (DOORS OVER 1 3/4" THICK), SEE TEMPLATE 4428 FOR TRIM DETAILS.
- ⑤ — SURFACE OF DOOR WHERE EXIT DEVICE IS TO BE APPLIED MUST BE FLUSH.
- ④ — SEE MASTER SHEET No. 4019 FOR AREAS REQUIRING REINFORCEMENTS.
- ③ — SEE STRIKE TEMPLATE FOR MOUNTING LOCATION OF STRIKE.
- ③ — FOR 881 MONITOR STRIKE SEE TEMPLATE # 4386
- ② — WE RECOMMEND THAT ALL TAPPED HOLES BE DRILLED & TAPPED IN FIELD.
- ① — TOLERANCE ON ALL DIMENSIONS ±1/32".

**SARGENT**® Manufacturing Company  
100 Sargent Drive New Haven, CT 06511

DOOR MANUFACTURERS TEMPLATE: 2828 & 3828 RIM EXIT DEVICE WITH KNOB OR LEVER TRIM	RELEASE DATE <b>31 JAN 06</b>
	TEMPLATE NO. <b>4303 G</b>

INTERPRET DRAWING PER ANSI Y14.5M-1994		DRAWN BY/DATE <i>CEA</i> 1/23/06		<b>SARGENT</b> ® SARGENT Manufacturing Company 100 Sargent Drive New Haven, CT 06511	
UNLESS OTHERWISE SPECIFIED ALL DIMENSIONS ARE IN INCHES.		CHECKED BY/DATE <i>L.M.</i> 1-31-06		ART. EXIT DEVICE TEMPLATE	
TOLERANCE	.XX ±.01	MFG ENG/DATE		TITLE: DOOR MANUFACTURERS TEMPLATE: 2828 & 3828 RIM EXIT DEVICE WITH KNOB OR LEVER TRIM	
ANGLE	±1°	FNL APPROVAL/DATE <i>CEA</i> 1/23/06		SIZE DWG No. 4303	
FRACTION	±1/64	FNL APPROVAL/DATE		REV G	
CONFIDENTIAL		PROD CTRL/FNL REL <i>CEA</i> 1/31/06		SCALE: 1:1 SHEET: 1 of 1	
THIS DOCUMENT IS THE CONFIDENTIAL PROPERTY OF SARGENT MANUFACTURING AND IS NOT TO BE REPRODUCED, USED OR DISCLOSED BY ANYONE WITHOUT THE EXPRESS WRITTEN PERMISSION OF THE SARGENT MANUFACTURING COMPANY.					

4

3

2

1

D

C

G

1

4303

DWG No.

A