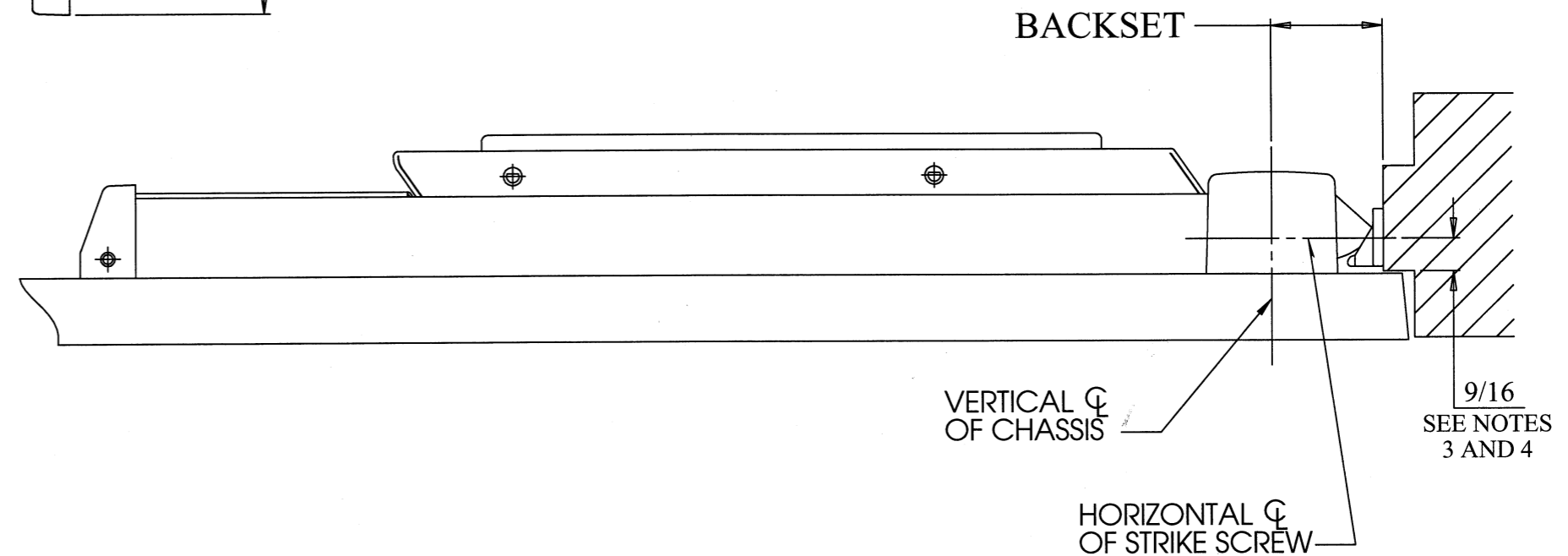
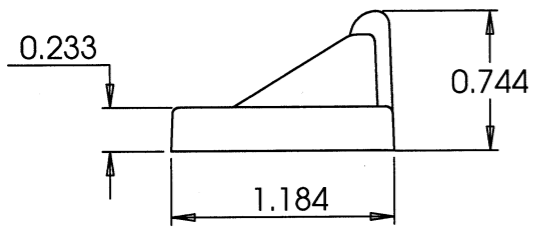


REQUIRED BACKSET		MINIMUM STILE REQUIRED WITH VARIOUS TRIMS		
EXIT DEVICE	BACKSET	ET, STS	PTB, PSB	FLW/FSW FLL/FSL MAL/MSL
2800, 3800, 5100 5800, 8800, 9800 P800	2 1/4"	3 1/2"	4"	3 9/16"
8500, 6500	1 1/2"	2 1/2"	3 1/4"	2 13/16"



1. TOLERANCES: FRACTIONAL  $\pm 1/64"$ , DECIMAL  $\pm .015$ .
2. SEE APPROPRIATE DOOR MANUFACTURERS TEMPLATE TO MOUNT EXIT DEVICE.
3. IF DOOR SILENCERS ARE USED ON THE FRAME, DECREASE THIS DIMENSION BY SILENCER HEIGHT.
4. IF "GLASS BEAD" SHIMS ARE USED, INCREASE THIS DIMENSION BY SHIM HEIGHT (1/8" PER SHIM USED).
5. AFTER STRIKE IS INSTALLED AND ADJUSTED, TWO CENTER HOLES ARE TO BE DRILLED AND TAPPED FOR # 10-24 ROUND HEAD MACHINE SCREWS.
6. MINIMUM STILE IS EFFECTED BY OUTSIDE TRIM, SEE TABLE.

<b>SARGENT</b> Manufacturing Company 100 Sargent Drive New Haven, CT 06511	
DOOR MANUFACTURERS TEMPLATE: 649 STRIKE SINGLE DOOR APPLICATIONS	RELEASE DATE <b>JUN 14 07</b> TEMPLATE NO. 4004 K