



ASSA ABLOY

Continuous Hinge Modifications

Markar Architectural Products, Inc. a subsidiary of Adams Rite Manufacturing Co.
260 Santa Fe Street, Pomona, CA 91767 • 800-872-3267 • 909-632-2300 • 800-232-6752 fax • www.markar.com

Special Length

Please specify handing on all custom hinge lengths

For hinges 40" to 83 1/8" in length

For hinges 83 3/16" to 95" in length

For hinges 95 1/16" to 118 3/4" in length

For hinges 118 13/16" to 192" in length (Spliced over 118 3/4")

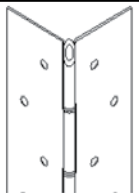
Some custom lengths may require two cuts due to location of screw holes

Hospital Tip

Available on all models except spring-loaded toilet partition hinges, FS 321 and FM 327

Suffix hinge **"-HT"**

Helps provide a safe, clean environment



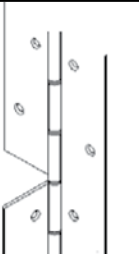
Dutch Door Prep

Available on all hinge models

Suffix hinge **"-DD"**

Continuous frame leaf with two-piece door leaf

Indicate handing, clearances, door and frame heights, and materials when ordering



Wide Throw

Only available on 300 series hinges

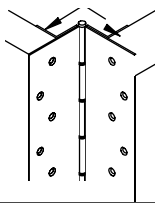
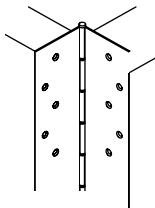
Suffix hinge **"-WT"**

Specify distance from pin centerline to heel edge of hinge when ordering

Reinforcement may be required on extreme wide throw applications

These conditions will be determined through a drawing approval process

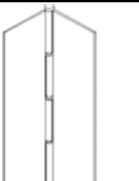
Cost will be determined at time of approval



Blank

Holes omitted for special applications, such as welded installation

Not available on adjustable models



Welded End Pins and Plug Weld

◆ Welded End Pins (Not available on Aluminum or Powder Coated Hinges)

◆ Plug Welding Hole Prep

◆ Automatic Door Bottom Cut

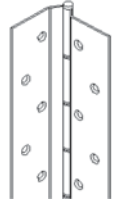
Raised Barrel (Swaged)

Available on all edge mount and half surface models except on **Aluminum hinges**

Required on models FS-201, FS-202, FS-301 & FS-302 in order to open 180°

Suffix hinge **"-RB"**

For cased open or center pivot doors



Standard Edge Guard Cut-Outs

- ◆ 4 7/8 ASA strike
- ◆ 161 latch
- ◆ 86 mortise
- ◆ manual flush bolt
- ◆ automatic flush bolt
- 161 strike



Security Studs

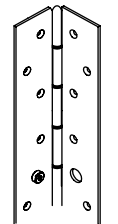
Stainless steel security studs mounted to the frame leaf

Door leaf is drilled to accommodate studs

Three studs installed on hinges up to 7'2"

Four studs installed on hinges over 7'2"

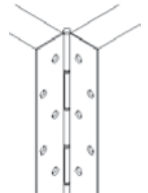
Door and frame must be specially prepared to accommodate security studs



Sheared Leaf

Used for narrow door thickness', unevenly rabbeted frames or other special applications

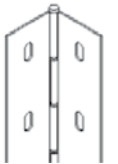
Specify distance from pin centerline to heel edge of hinge when ordering



Custom Hole Pattern

Any hole shape or pattern other than Markar's standard templated hole pattern

Indicate desired pattern and include dimensioned diagrams when ordering



Custom Design

Markar's engineering department will assist you in developing custom applications to solve any of your unique door hinging problems. Together with the customer, we will go through an official sign-off process to assure custom hinges fit your exact needs

Lead Lined Cover

Only available on surface mounted Hinges. Suffix hinge **"-LL"**

Used for x-ray room doors and other locations where radiation leakage could be a problem

Lead lined astragal for EGT



ASSA ABLOY

Continuous Hinge Modifications

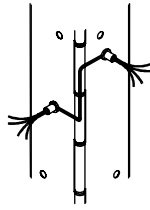
Markar Architectural Products, Inc. a subsidiary of Adams Rite Manufacturing Co.
260 Santa Fe Street, Pomona, CA 91767 • 800-872-3267 • 909-632-2300 • 800-232-6752 fax • www.markar.com

CE Concealed Current Transfer

For 100 series

CE-4: Qty (4) 28ga wires

CE-8: Qty (8) 28ga wires



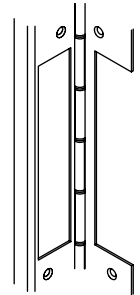
Available for all edge mount models. Please consult factory For all other applications.

CTP Current Transfer Prep

Centerline of hinge is standard location

Hinge leaf cutout to accommodate Markar's AR- EPT Electric Power Transfer or Von Duprin Power Transfer

Please provide location and handing for all locations



CE Concealed Current Transfer

For 300, 3500, and 200 series Edge mount only

CE-4D: Qty (4) 28ga wires

CE-8D: Qty (8) 28ga wires



EPT Electric Power Transfer

AR-EPT 4612-1

Allows 90° swing

AR-EPT-4612-2

Allows 180° swing for mortise

AR-EPT-4612-SC

Allows 90° swing clear

CTP prep charge is additional

See template, page 74, for power transfer.

EL ElectroLYNX™ Current Transfer

EL-8 For 300, 3500, and 200 series edge mount only. 28 gauge wires - with ElectroLYNX™ connectors (8 wire).

EL-12 For 300, 3500, and 200 series edge mount only. 28 gauge wires - with ElectroLYNX™ connectors (12 wire).

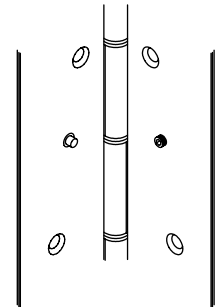
Note: Not available on raised barrel applications.

ES Exposed Monitoring Switch

Available in 100, 200, 300, and 3500 series hinges with the prefixes of HG, FM, HS, & HM

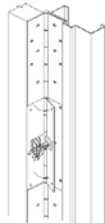
Suffix hinge "-ES"

Comes with 3 × 28ga wires



MP-ETAP Electrical Transfer Access Prep

Cutout prep for the CE, AMS, CT, & ES. Modifications that allows easy one person access to wiring between the hinge and door



Security Fasteners

Specify Torx or Torx-Pin security fasteners in lieu of standard fasteners

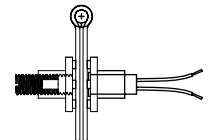
Contact factory for compatible models



AMS Adjustable Monitoring Switch

Rigid welded assembly gives you the ability to adjust your monitoring switch to work with all applications

Not available on aluminum



Medical Bearings

- ◆ Self lubricating with high resistance to wear
- ◆ Uniquely designed to provide clean and quiet hinge operation
- ◆ Exceeds ANSI/BHMA Grade 1 requirements
- ◆ Supports doors weighing up to 600 lbs.
- ◆ 25 year warranty



Standard Edge Guard

Cut-Outs

- ◆ 4 7/8 ASA strike
- ◆ 161 latch
- ◆ 86 mortise
- ◆ manual flush bolt
- ◆ automatic flush bolt
- ◆ 161 strike

