

Notes:

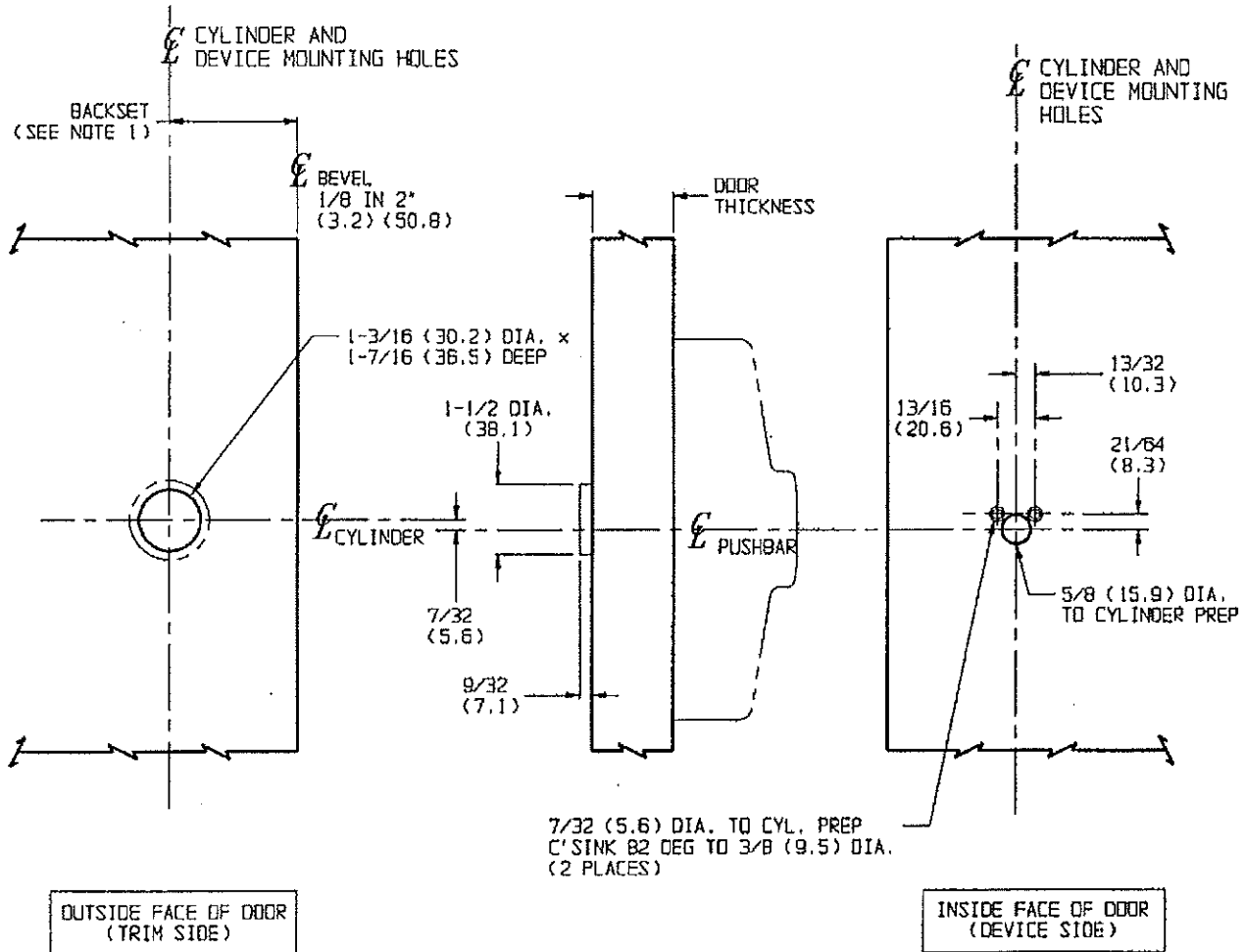
1. Backset is measured from centerline of bevel which is centerpoint of door thickness. Refer to appropriate device template for backset dimension.
2. Dimensions given in inches and (mm).
3. Suitable reinforcements/blocking are required to support exit device and cylinder trim for wood and composite door applications. Inside of metal door face must be reinforced when door skin thickness is less than .090 (2.3).
4. Prep shown applies to Corbin Russwin K157 rim cylinder trim only. For rim cylinders by other manufacturers, use screws and templating by other manufacturers.

CAUTION: Cylinder mounting screws should fit without interfering with 5/8 (15.9) dia. hole or projecting from inside door face. Check prep feasibility before drilling door.

TEMPLATE CROSS REFERENCE

Device	Description	Template
Rim	ED4200 Series	T30874
SVR	ED4400 Series	T30875
	ED4400 Series x S09 x T'hold	T30876
	ED4400 Series x S09	T30877
CVR	ED4800 Series	T30878
	ED4800 Series x S09 x T'hold	T30879
	ED4800 Series x S09	T30880

①



**K157**  
Rim Cylinder Exit Trim  
(ED4000 Series Narrow Stile)

**Corbin Russwin**  
www.corbinrusswin.com

SUPERSEDES T30887 DO NOT SCALE DRAWING  
TEMPLATE NUMBER T30887-1 DATE 8-02