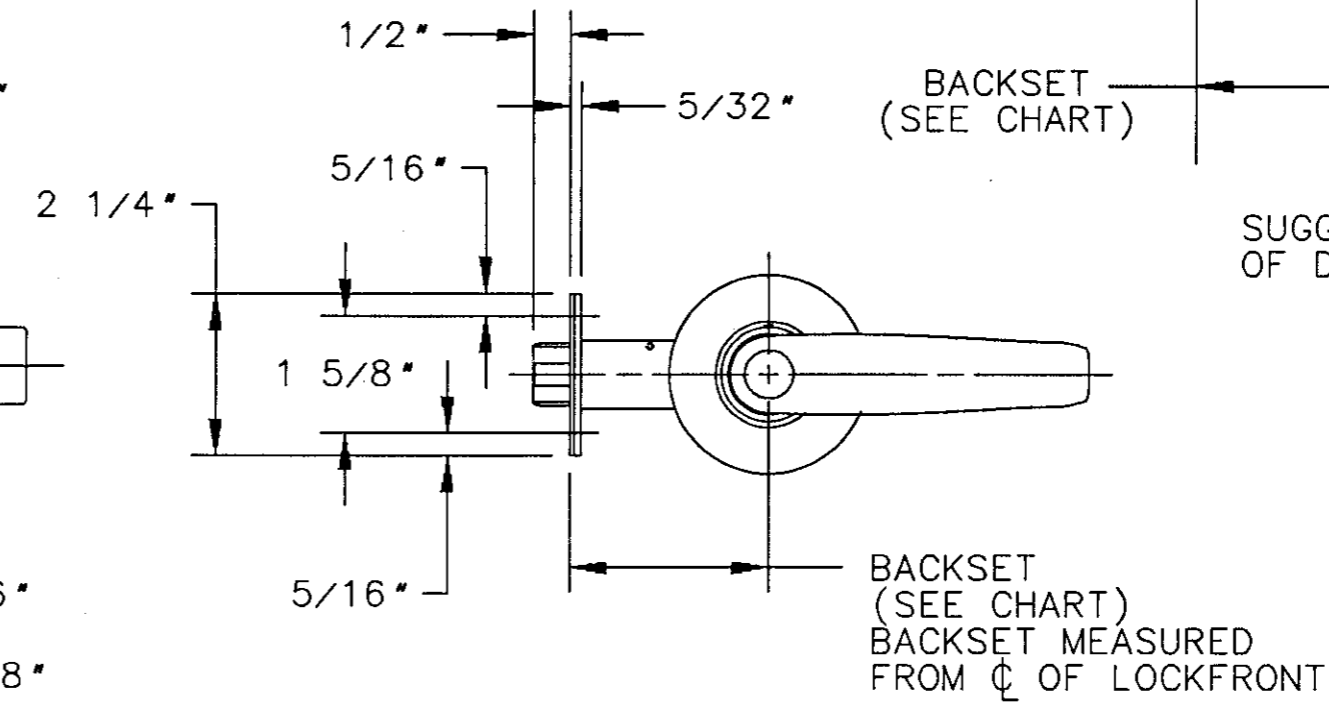
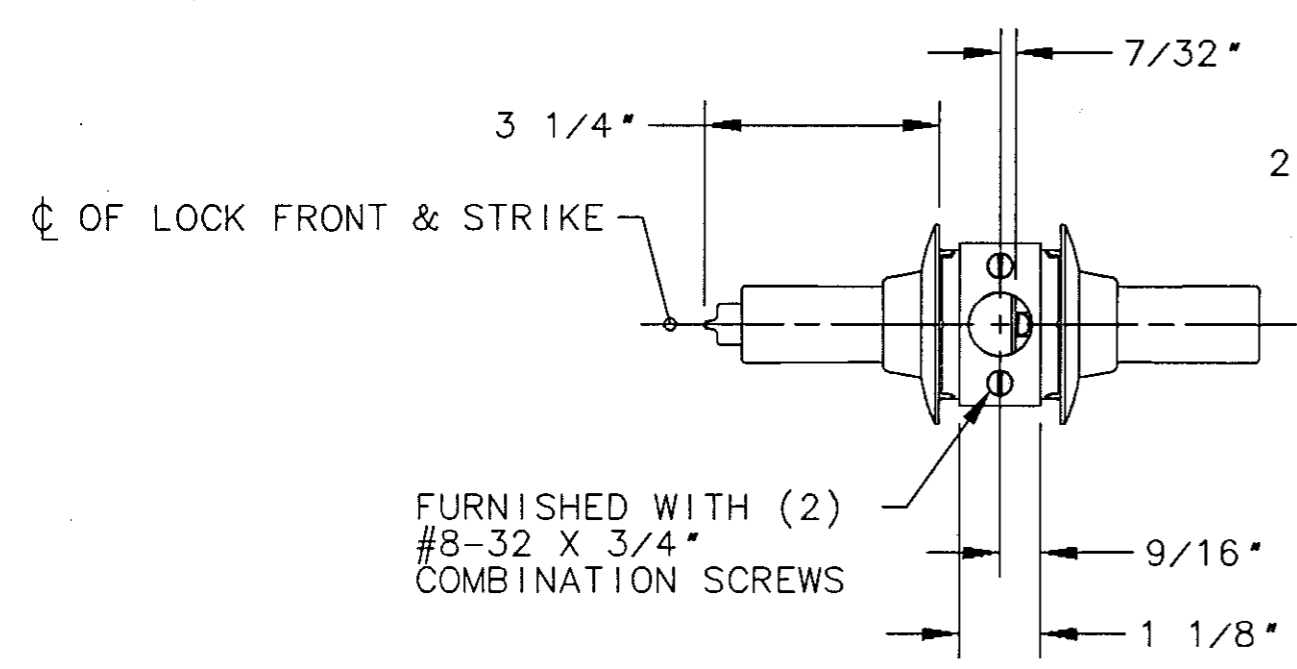
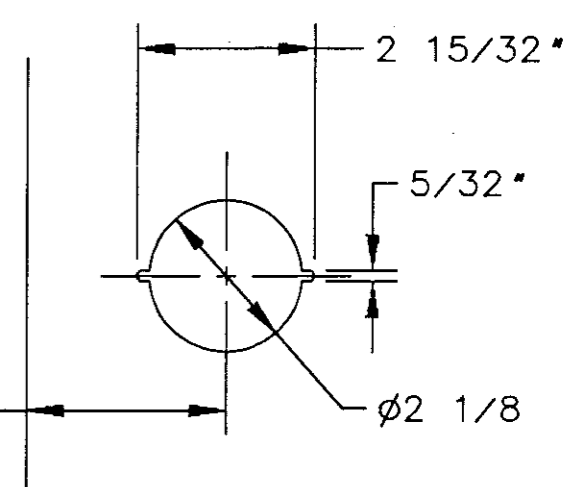
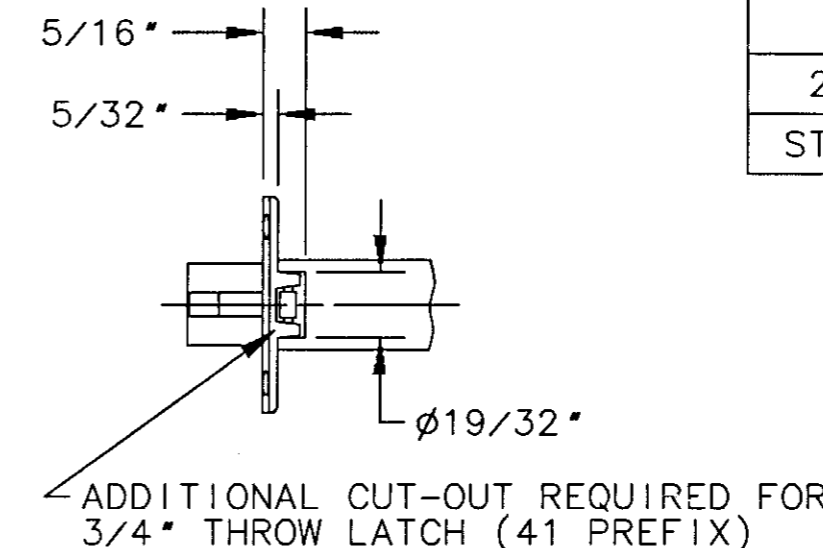
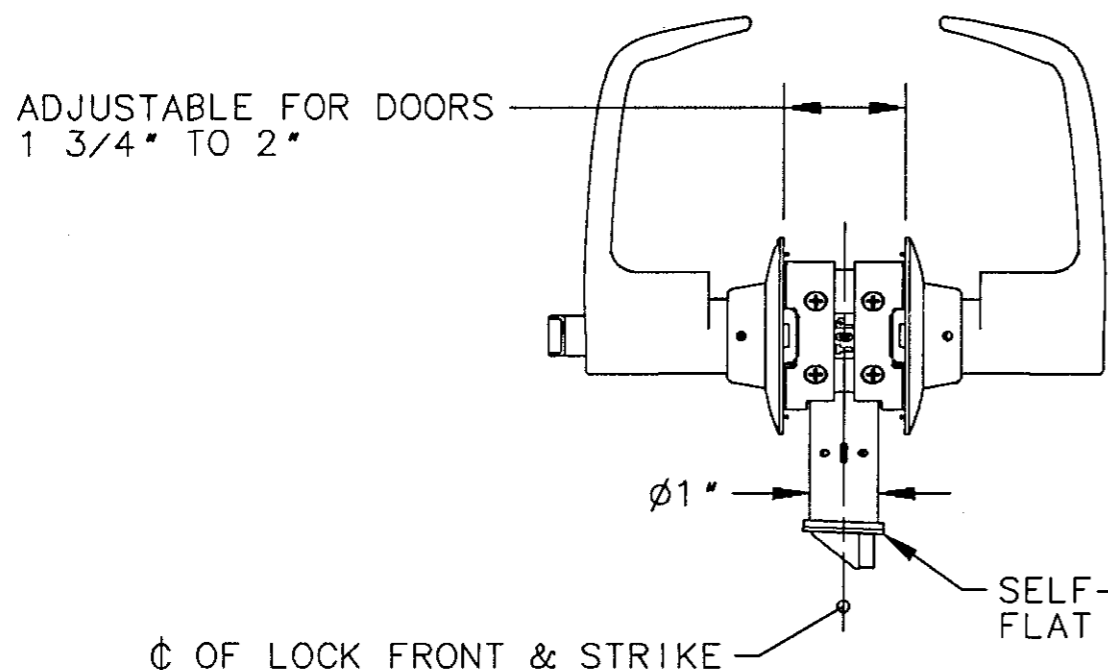


BACKSETS		
2 3/4"	3 3/4"	5"
STANDARD	23 PREFIX	25 PREFIX



SUGGESTED DETAIL
OF DOOR CUT-OUT

NOTES:

1. ON METAL DOORS LOCK AND LATCH MUST HAVE MINIMUM REINFORCEMENT PER A115.2
2. ALL FUNCTIONS (EXCEPT 93 & 94) WILL FIT CURRENT ANSI STANDARD A115.2 DOOR PREPARATION FOR 2 3/4" BACKSET. FOR REGULARLY FURNISHED STRIKE, SEE TEMPLATE NO 4131. FOR 4 7/8" STRIKE SEE TEMPLATE NO 4049. MODIFY DOOR PREPARATION FOR 3 3/4" & 5" BACKSETS.
3. SAME MORTISING FOR ALL FUNCTIONS (EXCEPT 93 & 94), SEE TEMPLATE NO 4539.
4. DIMENSIONS SHOWN ARE MAXIMUM PART DIMENSIONS.
5. ROSE AND LEVER DIMENSIONS VARY BY DESIGN, ROSES AVAILABLE ARE 2 3/4" DIA, 3 1/2" DIA AND 3 1/8" SQUARE.

SARGENT® Manufacturing Company 100 Sargent Drive New Haven, CT 06511	
11 LINE T-ZONE LEVER LOCK	RELEASE DATE MARCH 01
	TEMPLATE NO. 4527A