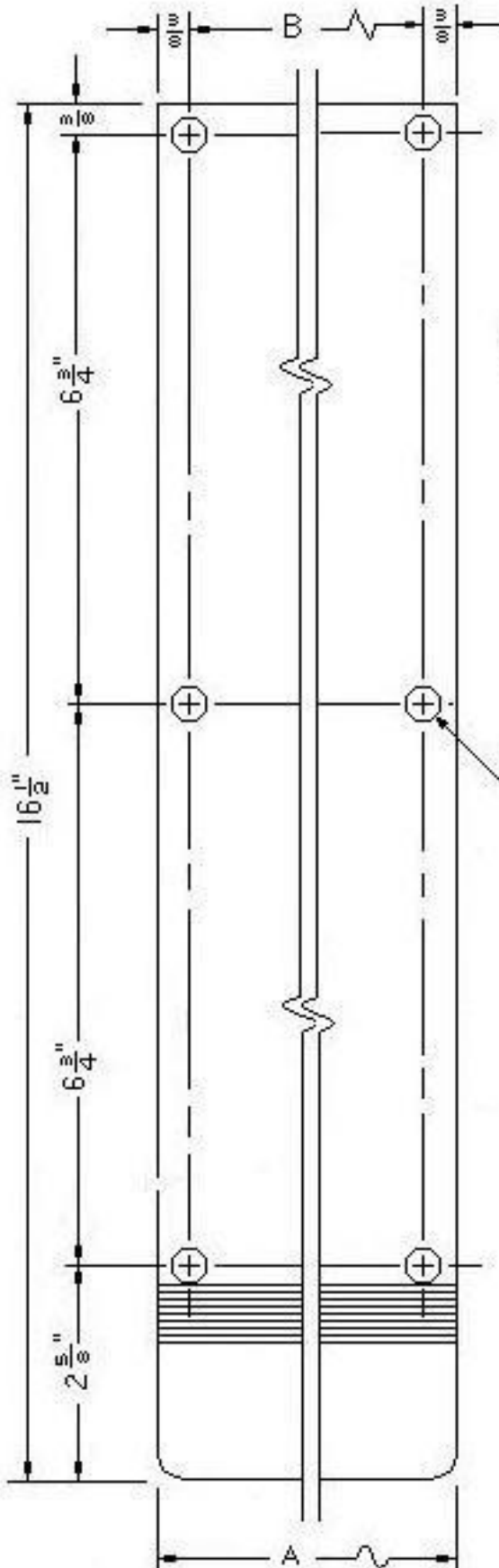


A REVISED 12-21-86

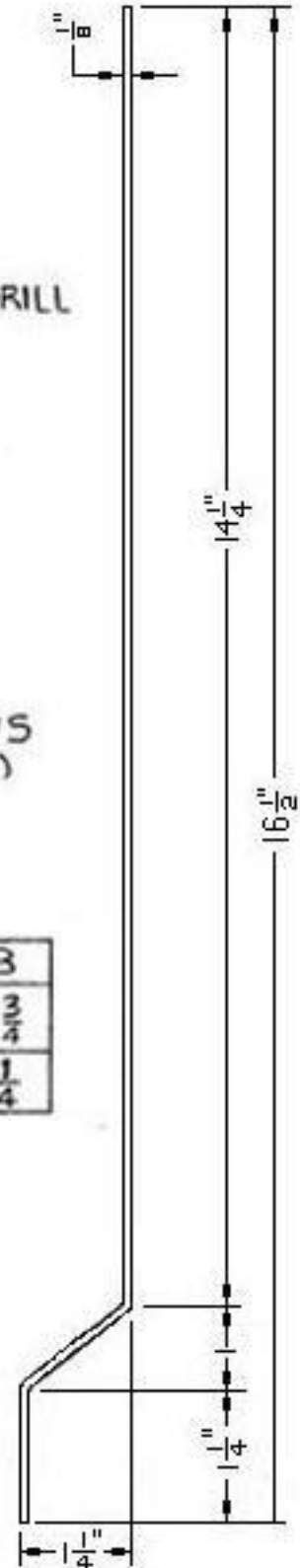
B REVISED: 4-5-95



NOTES:  
1. DO NOT PREDRILL  
DOOR.

NO 8X1 OHPHWS  
(3/16" DIA., CONK)

TRIMCO #/N	A	B
1820	3 1/2"	2 3/4"
1820-11	8"	7 1/4"



DWG. NO. 11516

**Trimco / BBW**  
Target Brass Manufacturing Company, Inc.  
3528 Emery Street, P.O. Box 23277  
Los Angeles, CA 90023, USA

1820, 1820-11  
PUSH AND PULL PLATE  
DR. BY: L.R.