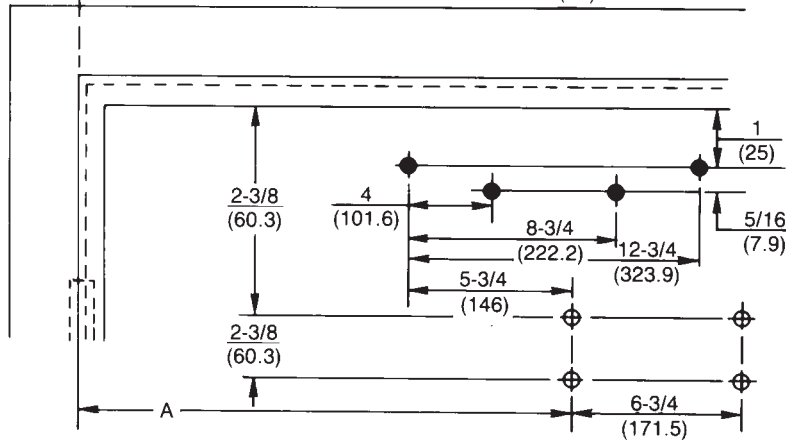


◆ 7788 drop plate mounting holes only



Notes:

- Do not scale drawing.
- All dimensions shown in inches (mm.).
- Left hand door shown.
- Caution: Hollow metal doors require channel or box type reinforcement.

| Preparation for Fasteners                 |                           |                  |   |
|---|---------------------------|------------------|---|
| Fasteners                                 | Application               | Door or Frame    | Drill Sizes   |
| Sex-nuts and bolts                        | Closer Drop plate         | Hollow Metal     | 9/32" (7.00mm.) through 3/8" (9.50mm.) door face opposite to closer                           |
|   |                           | Aluminum or wood | 3/8" (9.50mm.) through  |
| #14 x 1-1/4" (32mm.) type "A" S.M. screws | Soffit plate 6190 Bracket | Wood             | 3/16" (4.30mm.)   |
| 1/4-20 machine screw                      |                           | metal            | drill: #7 (.201" dia.) tap: 1/4-20  |
| Through bolts and grommet nuts            | Optional                  | All              | 9/32" (7.00mm.) through 3/8" (9.50mm.) dia. x 3/8" (10mm.) deep, door face opposite to closer |

| Door Opening Angle |           | Dimensions*             |     |             |     |               |     |             |     |
|--------------------|-----------|-------------------------|-----|-------------|-----|---------------|-----|-------------|-----|
| Hold Open **       | Dead Stop | Butts and Offset Pivots |     |             |     | Center Pivots |     |             |     |
|                    |           | Dimension A             |     | Dimension B |     | Dimension A   |     | Dimension B |     |
|                    |           | Inches                  | mm. | Inches      | mm. | Inches        | mm. | Inches      | mm. |
| 85°                | 90°       | 10¼                     | 260 | 10½         | 267 | 11¼           | 286 | 11½         | 292 |
| 90°                | 95°       | 9⅝                      | 244 | 9⅞          | 251 | 10½           | 267 | 10¾         | 273 |
| 95°                | 100°      | 9⅞                      | 232 | 9⅞          | 238 | 10            | 254 | 10¼         | 260 |
| 100°               | 105°      | 8¾                      | 222 | 9           | 229 | 9½            | 241 | 9¾          | 248 |
| 105°               | 110°      | 8⅝                      | 213 | 8⅝          | 219 | 9⅞            | 232 | 9⅞          | 238 |
| 110°               | 115°      | 8                       | 203 | 8¼          | 210 | 8¾            | 222 | 9           | 229 |

\* "A" and "B" dimensions measured from centerline of hinge or pivot.  
 \*\* Door must be free to swing up to 5° beyond hold open position.

**Unitrol® with 6191 Reinforcing Kit**  
**Series UNI-7500 & UNI-7700**  
**Doors 28"-32" (0.70-0.80m) Wide**

**Parallel Arm Installation Template**  
**Stop Only or Hold Open Unitrol®**  
**Backcheck or Delayed Action Door Closer**  
**With or Without 7788 Drop Plate**



ASSA ABLOY

www.nortondoorcontrols.com

TEMPLATE NUMBER

**7377-1357**

DATE

**07-08**