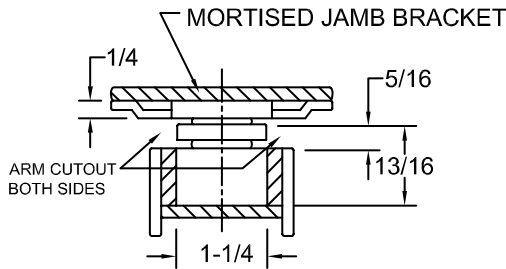
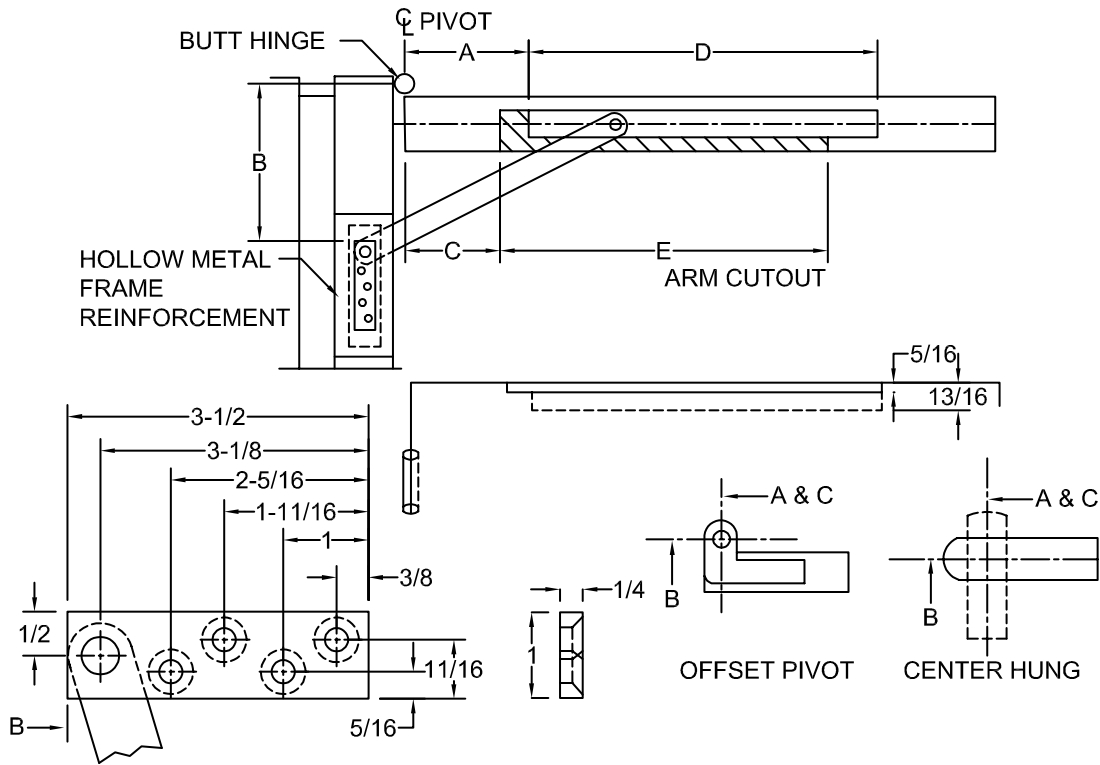
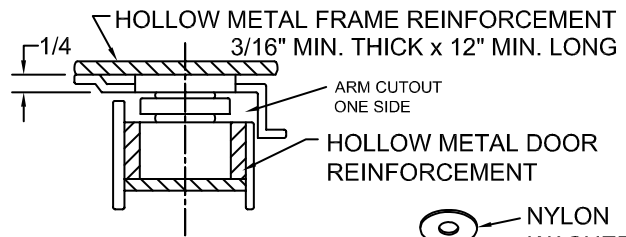


# 1000 SERIES SLIM-LINED CONCEALED HOLDERS & STOPS

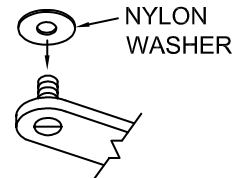
REVERSIBLE FOR SINGLE OR DOUBLE ACTING DOORS ONLY NON - HANDED



DOUBLE ACTING DOOR  
ARM CUTOUT BOTH SIDES



SINGLE ACTING DOOR  
ARM CUTOUT ONE SIDE



1000 SLT REPLACES THE JAMB BRACKET WITH A THREADED NYLOK JAMB PIVOT SCREW, ADD 3/8" TO B DIM. DRILL & TAP FRAME FOR 3/8-24 M.S. NO FRAME PREP NEEDED. NOTE: 1/4" OR GREATER REINFORCEMENT RECOMMENDED

NOTE: ALL A, B & C DIMENSIONS MEASURED FROM  $\phi$  OF PIVOT.

SCREW DETAIL			
	QTY	WOOD	METAL
JAMB	4	No. 14 X 1-1/2" F.H.W.S.	1/4" - 20 x 3/4" F.H.M.S.
DOOR	2	No. 18 X 2-1/2" F.H.W.S.	5/16" - 18 x 1-1/2" F.H.M.S.

ALWAYS REQUEST LATEST TEMPLATE DRAWINGS FOR NEW INSTALLATIONS

DO NOT SCALE DRAWINGS ALL DIMENSIONS ARE IN INCHES



www.abhmfg.com

E-mail: abhinfo@abhmfg.com

Architectural Builders Hardware Mfg., Inc.

1222 Ardmore Ave., Itasca, IL 60143

630.875.9900; FAX 800.9FAXABH (932.9224)

© 2008 ABH Mfg., Inc.  
printed in USA

1000SL

REVISED 04-07-08

1000SL-1-02.DWG

# 1010SL SERIES HOLDERS, 1020SL SERIES STOPS

## CONCEALED MOUNTING

REVERSIBLE/ NON-HANDED

SEE OTHER SIDE FOR INSTALLATION INSTRUCTIONS  
 SELECT PROPER DIMENSIONS FROM CHART BELOW  
 FOR 1000SLT ADD 3/8" TO 'B' DIMENSION

DIMENSIONS BELOW- HOLD-OPEN FOR HOLDERS, OPENING FOR STOPS  
 ALL DIMENSIONS SHOWN IN INCHES  
 FOR DEAD STOP ADD 7/8" TO "A" DIMENSION

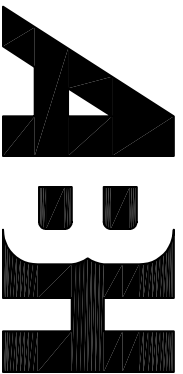
DEGREE	85° H.O.					90° H.O.					95° H.O.					100° H.O.					105° H.O.					110° H.O.				
	MODEL NO.	DOOR OPENING	A	B	C	E	A	B	C	E	A	B	C	E	A	B	C	E	A	B	C	E	A	B	C	E	D			
1-3/4" TO 2-1/4" THICK DR BUTT & OFFSET PIVOT																														
1011SL	27-29 15/16	6 1/8	6 1/8	5 1/2	16 7/8	5 11/16	5 11/16	5	16 7/8	5 3/8	5 3/8	4 1/2	17 1/8	* 5 1/8	* 4 11/16	* 2	* 19 5/16	—	—	—	—	—	—	—	—	—	—	—	17 3/8	
1012SL	30-35 15/16	7 3/8	7 3/8	6 3/4	18 5/16	6 15/16	6 15/16	6 1/4	18 3/8	6 1/2	6 1/2	5 3/4	18 7/16	6 3/16	6 3/16	5 1/2	18 3/8	5 7/8	5 7/8	3 13/16	19 3/4	* 5 5/8	* 5 5/8	* 1	* 22 5/16	—	—	18 13/16		
1013SL	36-39 15/16	11 5/8	8 9/16	6 3/4	22 7/8	11 1/16	8	7 1/4	22 7/8	10 5/8	7 9/16	6 3/4	22 7/8	10 3/16	7 1/8	6 1/2	22 3/4	9 13/16	6 3/4	6	22 3/4	9 1/2	6 7/16	5	23 1/2	20 1/8	—	—		
1014SL	40-43 15/16	14 7/16	9 5/8	9	25 5/8	13 7/8	9 1/16	8 1/4	25 7/8	13 5/16	8 1/2	7 3/4	25 3/4	12 13/16	8	7 1/4	25 3/4	12 7/16	7 5/8	7	25 5/8	12 1/16	7 1/4	6 1/2	25 3/4	21 5/16	—	—		
1015SL	44-UP	17 5/16	10 1 1/16	10	28 5/8	16 5/8	10	9 1/4	28 5/8	16 1/16	9 7/16	8 3/4	28 5/8	15 1/2	8 7/8	8	28 13/16	15 1/8	8 7/16	7 3/4	28 5/8	14 1 1/16	8 1/16	7 1/4	28 3/4	22 7/16	—	—		

\* BUTT HUNG ONLY

"A", "B" AND "C" DIMENSIONS MEASURED FROM CENTER LINE OF PIVOT NOT EDGE OF DOOR

DEGREE	85° H.O.					90° H.O.					95° H.O.					100° H.O.					105° H.O.					110° H.O.				
	MODEL NO.	DOOR OPENING	A	B	C	E	A	B	C	E	A	B	C	E	A	B	C	E	A	B	C	E	A	B	C	E	D			
CENTER HUNG																														
1011SL	30-32 15/16	6 7/8	6 7/8	6 1/4	16 7/8	6 7/16	6 7/16	5 3/4	16 7/8	6 1/8	6 1/8	5 3/8	16 7/8	—	—	—	—	—	—	—	—	—	—	—	—	—	—	—	17 3/8	
1012SL	33-38 15/16	8	8	7 1/4	18 7/16	7 1/2	7 1/2	6 3/4	18 7/16	7 1/8	7 1/8	6 1/2	18 5/16	6 1 1/16	6 1 1/16	6	18 3/8	6 3/8	6 3/8	5 3/4	18 5/16	6 1/8	6 1/8	5 1/2	18 5/16	—	—	18 13/16		
1013SL	39-42 15/16	12 5/16	9 1/4	8 1/2	22 7/8	11 3/4	8 1 1/16	8	22 3/4	11 1/4	8 3/16	7 1/2	22 3/4	10 13/16	7 3/4	7 1/8	22 3/4	10 7/16	7 3/8	6 3/4	22 3/4	10 1/8	7 1/16	6 3/8	22 3/4	20 1/8	—	—		
1014SL	43-46 15/16	15 1/4	10 7/16	9 3/4	25 3/4	14 9/16	9 3/4	9	25 3/4	14	9 3/16	8 1/2	25 3/4	13 9/16	8 3/4	8	25 3/4	13 1/8	8 5/16	7 1/2	25 3/4	12 3/4	7 9/16	7 1/4	25 3/4	21 5/16	—	—		
1015SL	47-UP	18 1/8	11 1/2	10 3/4	28 3/4	17 3/8	10 3/4	10	28 3/4	16 3/4	10 1/8	9 1/2	28 5/8	16 1/4	9 5/8	9	28 5/8	15 3/4	9 1/8	8 1/2	28 5/8	15 5/16	8 1 1/16	8	28 5/8	22 7/16	—	—		

1000SL-2-02.DWG



www.abhmf.com

E-mail: abhinfo@abhmf.com

Architectural Builders Hardware Mfg., Inc.

1222 Ardmore Ave., Itasca, IL 60143

630.875.9900; FAX 800.9FAXABH (932.9224)

©2008 ABH Mfg., Inc.  
 printed in USA

# 1000SL

REVISED 04-08-08