

Trimco
 Trimco Brass Manufacturing Company, Inc.
 3528 Emery Street, P.O. Box 23277
 Los Angeles, CA 90023, USA

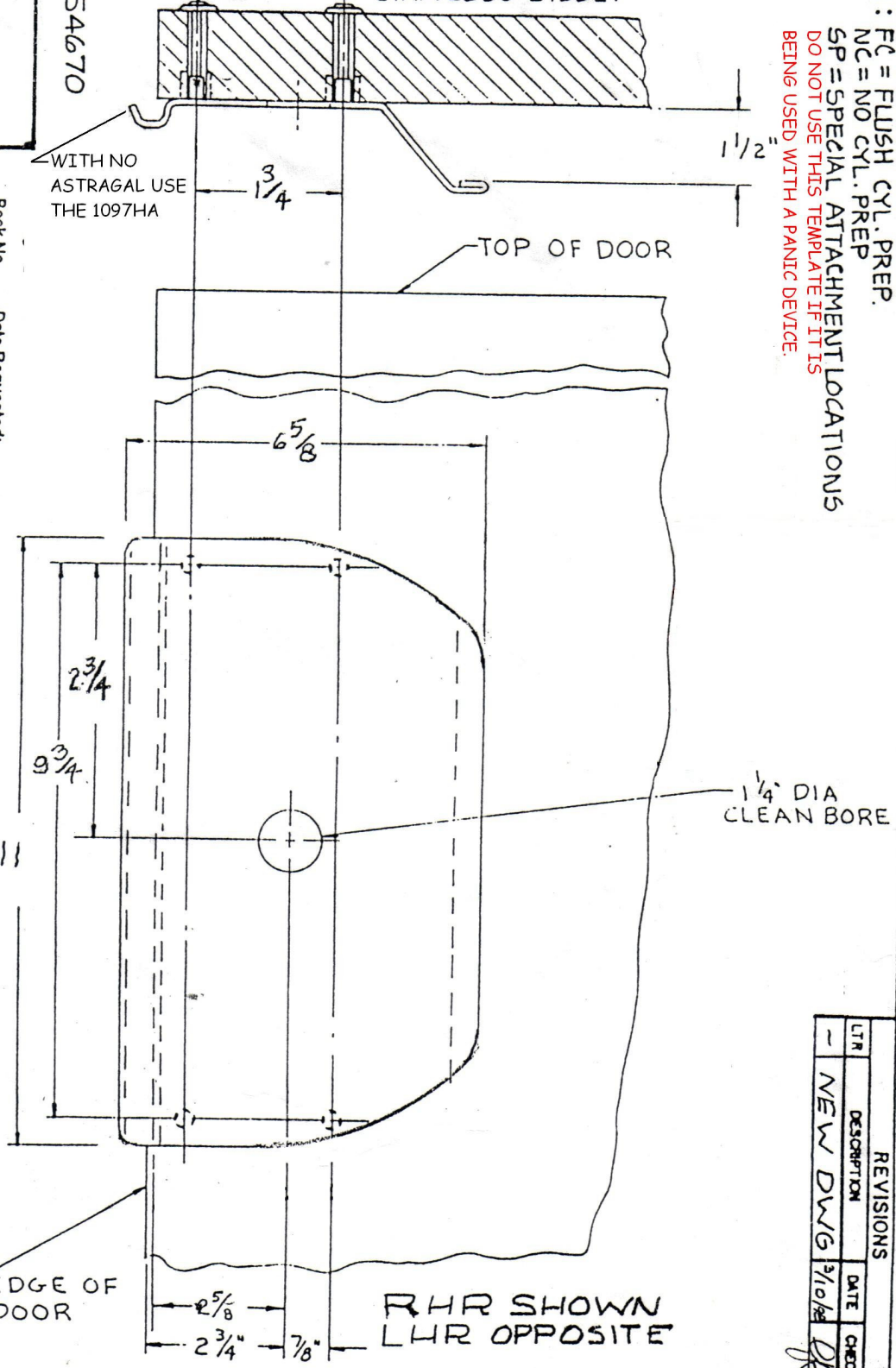
PATENT NO. 354670

DRILL 1/2" DIA HOLE
 1/4-20 x 1 1/2 PHO HMS
 X FINISH WASHER
 (4 PLACES)
 NOTE: 2. ADD 3/4 DIA. x 1/2 DEEP COUNTERBORE
 WHEN 1096 MAT'L. OTHER THAN
 STAINLESS STEEL.

NOTES: 1. SUFFIX: FC = FLUSH CYL. PREP.
 NC = NO CYL. PREP.
 SP = SPECIAL ATTACHMENT LOCATIONS
 DO NOT USE THIS TEMPLATE IF IT IS
 BEING USED WITH A PANIC DEVICE.

WITH NO
 ASTRAGAL USE
 THE 1097HA

Book No. _____ Date Requested: _____
 This template is provided for use only on
 the job for which it was requested.
 Trimco/BBW reserves the right to make
 design changes without notice.



REVISIONS		
LTR	DESCRIPTION	DATE
-	NEW DWG	3/10/98

Drawn by: JCS	3-10-98	B	Order No: 11796
TITLE: TEMPLATE ANTIVANDAL PULL, MORTISE LOCK CONFIGURATION			
PART NO: 1096HA			