

DOOR & FRAME PREPARATION

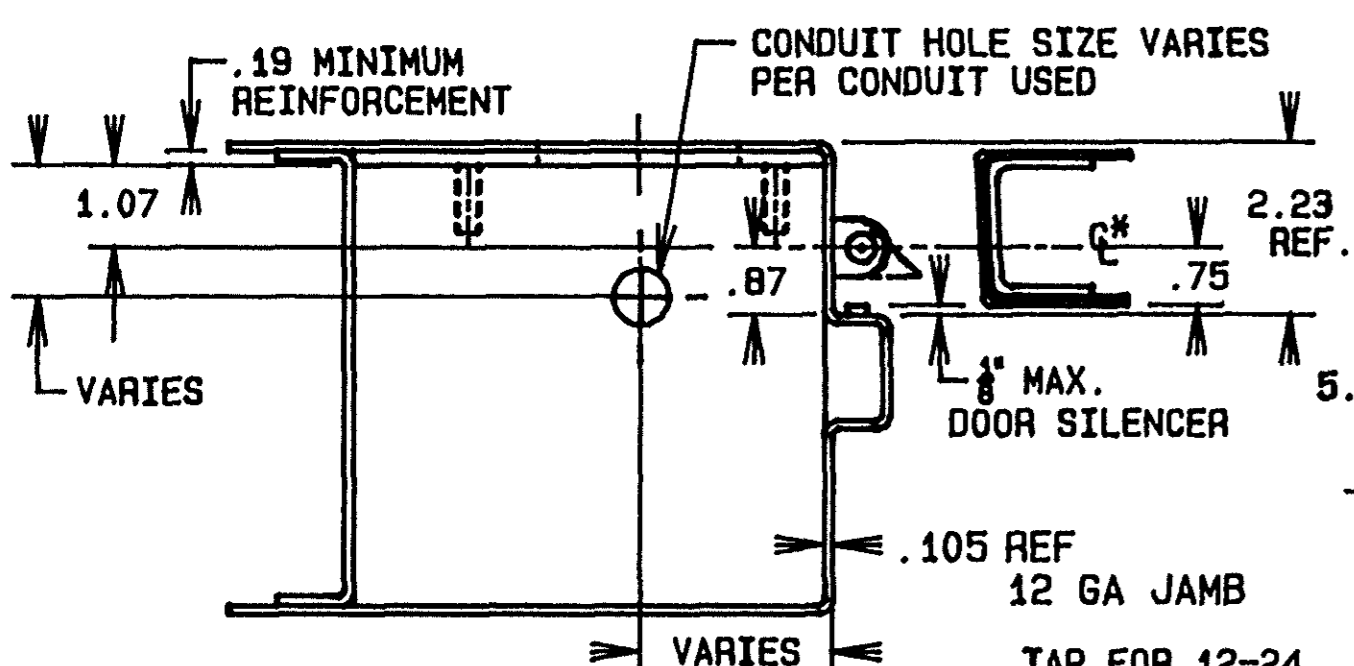
DRAWING SHOWS ONLY ONE METHOD OF INSTALLATION, WHICH MAY VARY PER DOOR & FRAME MANUFACTURER.

STRIKE PREP DIMENSIONS ARE TAKEN FROM HINGE SIDE OF DOOR, NOT STOP SIDE.

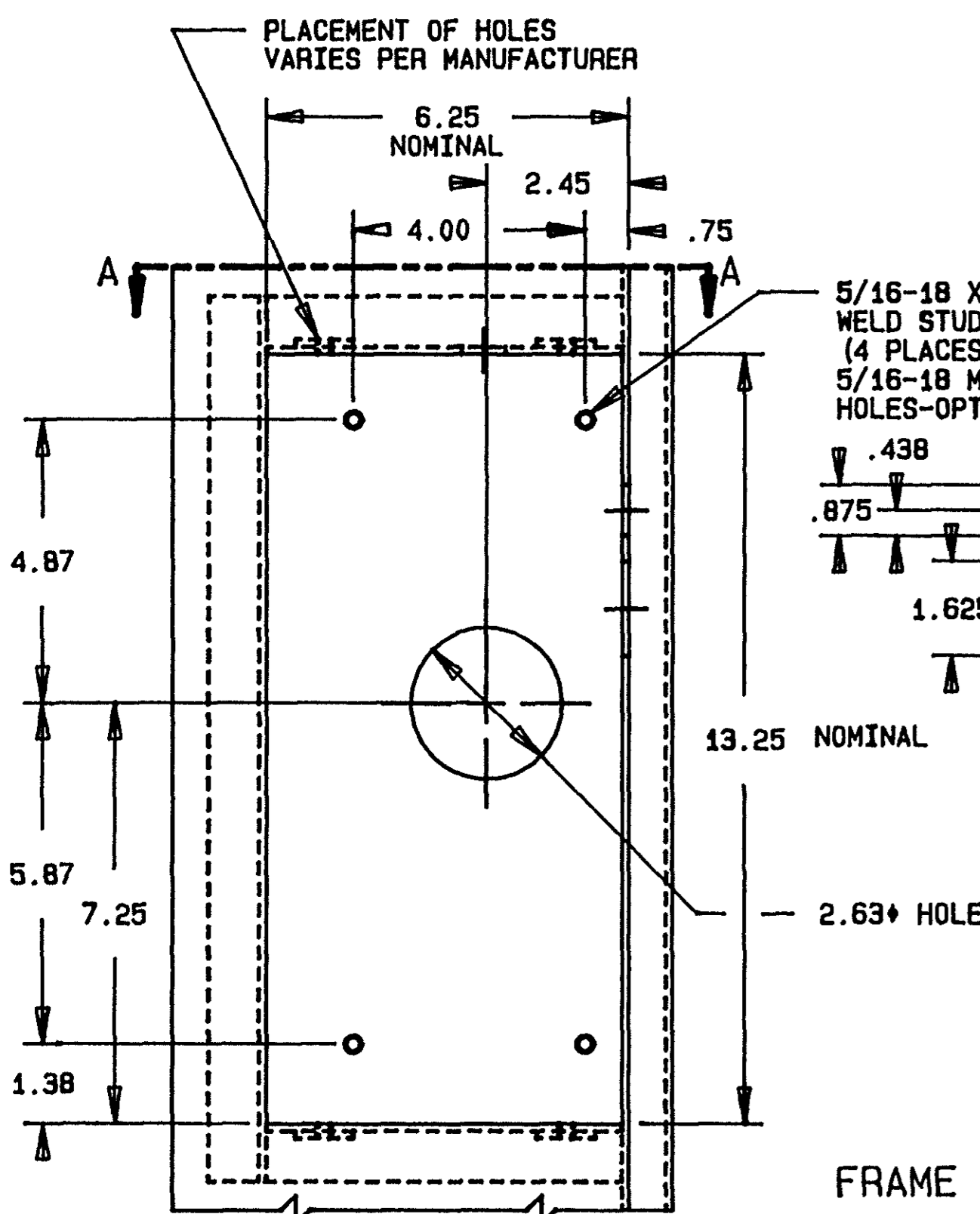
* CENTERLINE OF BOLT IN STRIKE MUST BE IN LINE WITH CENTERLINE OF BOLT IN LOCK. MAXIMUM GAP ALLOWED BETWEEN LOCK AND STRIKE IS 1/4" AT THE CENTERLINE OF THE BOLT

NOTE: DIMENSIONS SHOWN ARE FOR A 2" DOOR

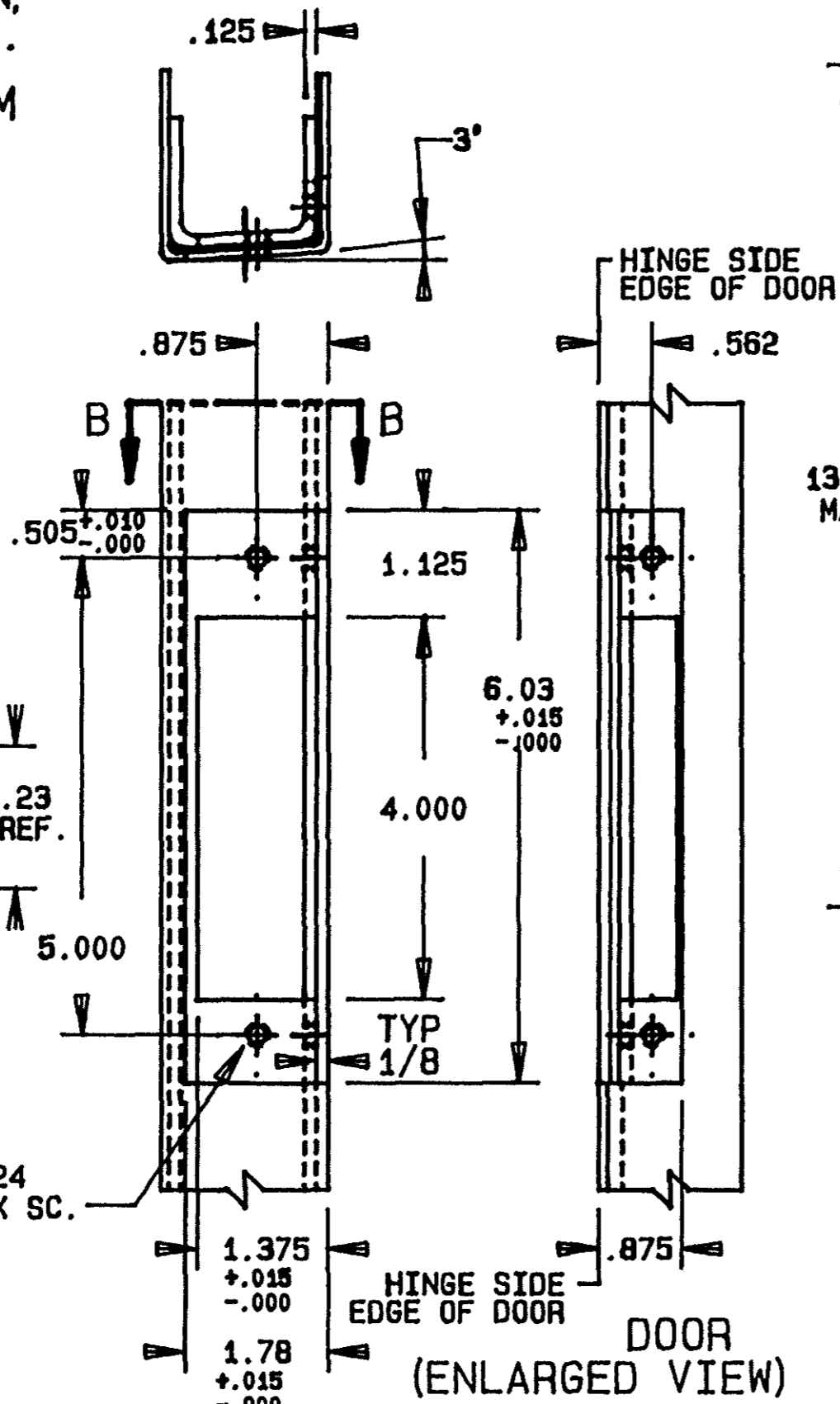
REFERENCE ONLY



SECTION A-A



SECTION B-B

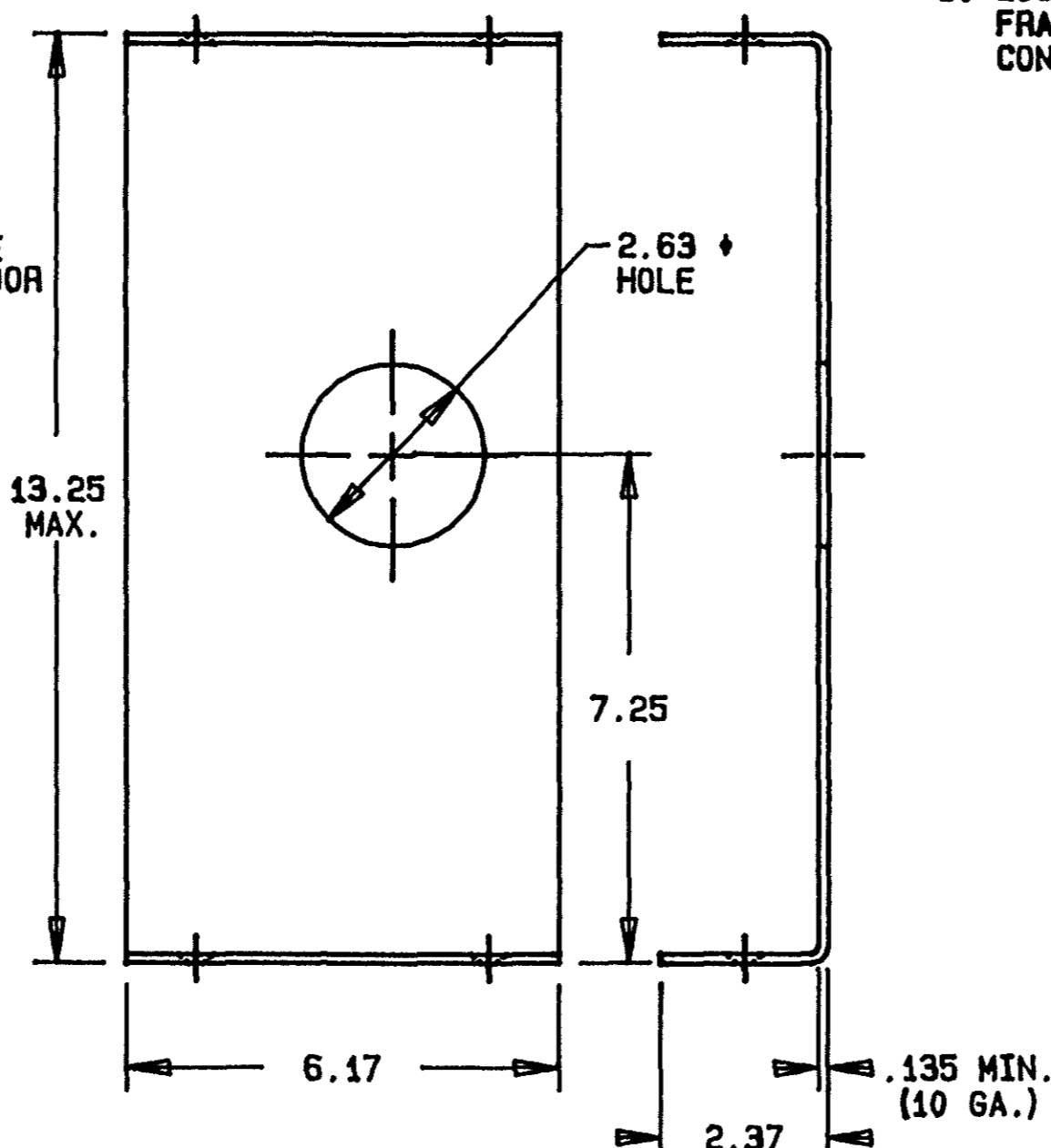


POCKET COVER PLATE

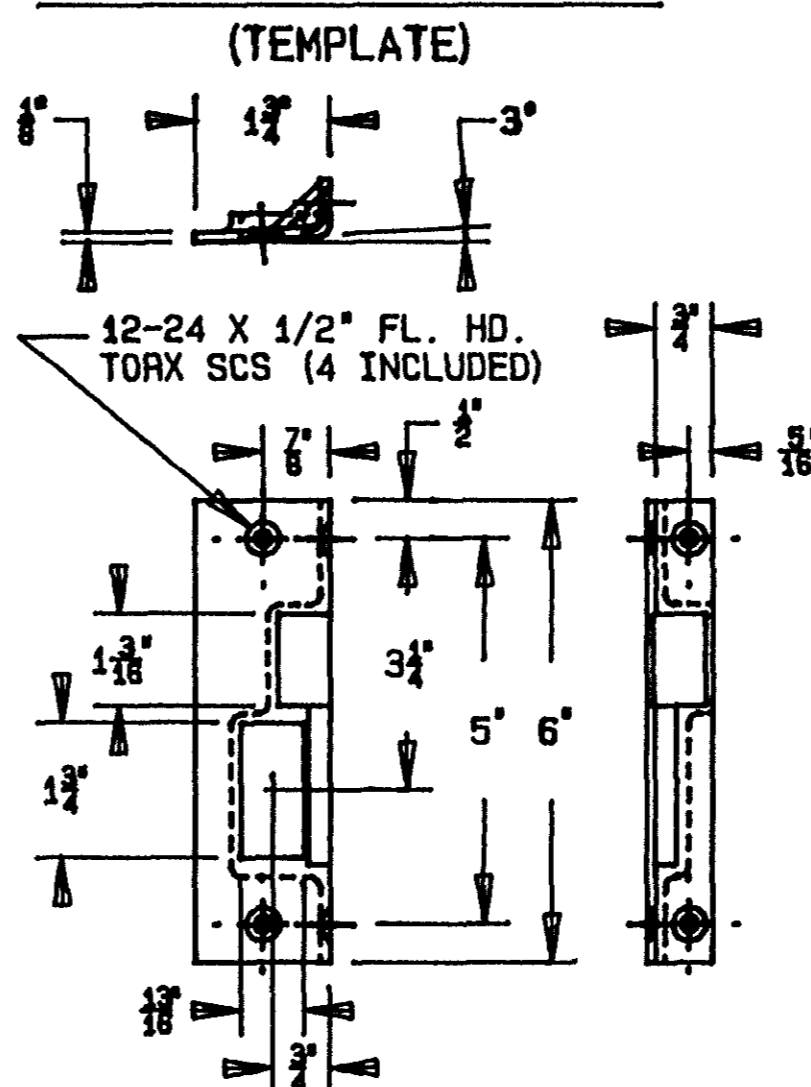
BY FRAME MANUFACTURER

NOTES:

1. MOUNTING HOLES & CYLINDER HOLE LOCATION TO MATCH LOCK POCKET MOUNTING BOX.
2. LOCK POCKET MOUNTING BOX & COVER BY OTHERS.
3. LOCK IS DESIGNED TO BE INSTALLED WITHIN THE FRAME WITH AN APPROPRIATE POCKET COVER PLATE. CONTACT FACTORY FOR OTHER APPLICATIONS.



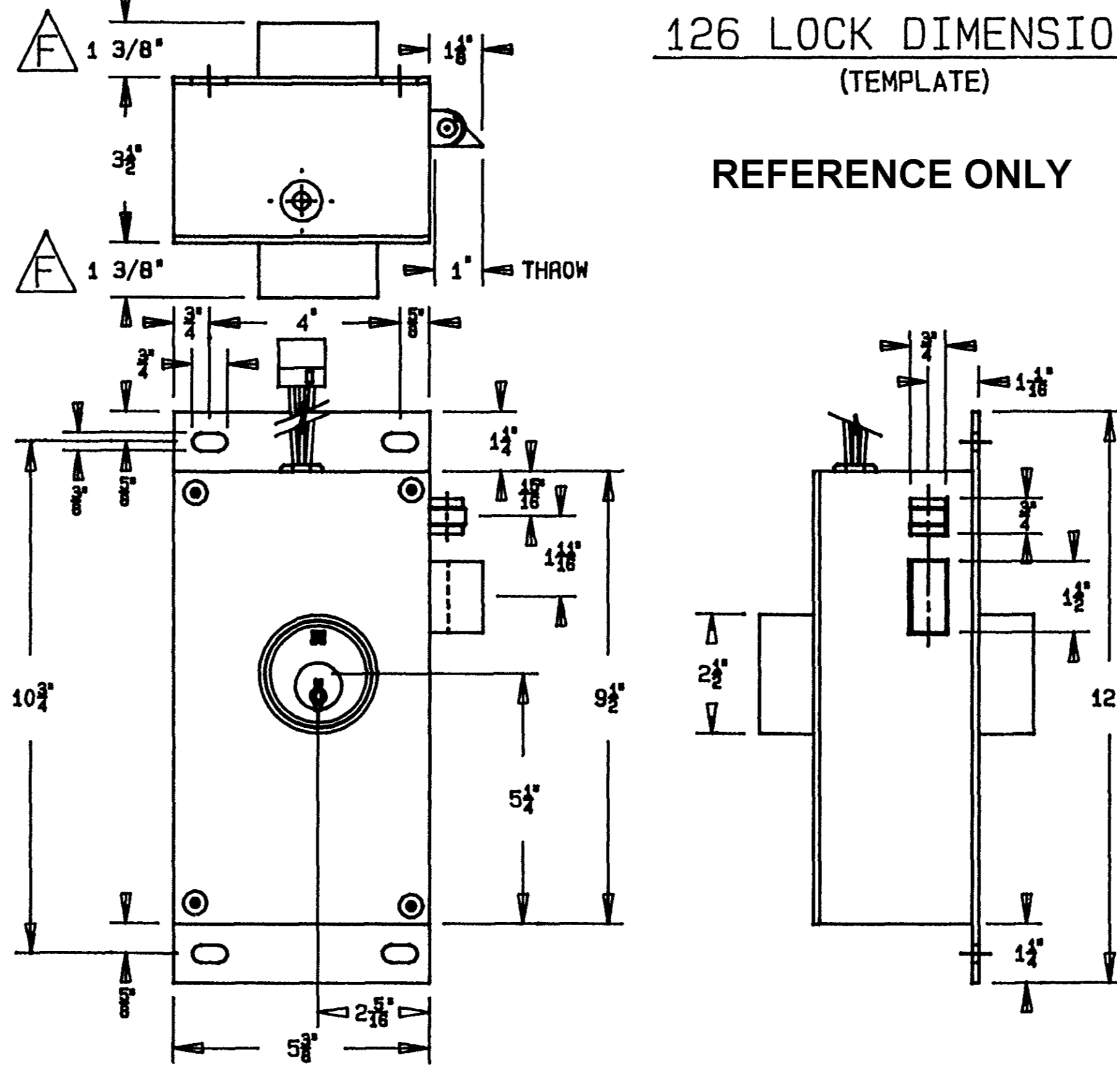
120 LOCK STRIKE



126 LOCK DIMENSIONS

(TEMPLATE)

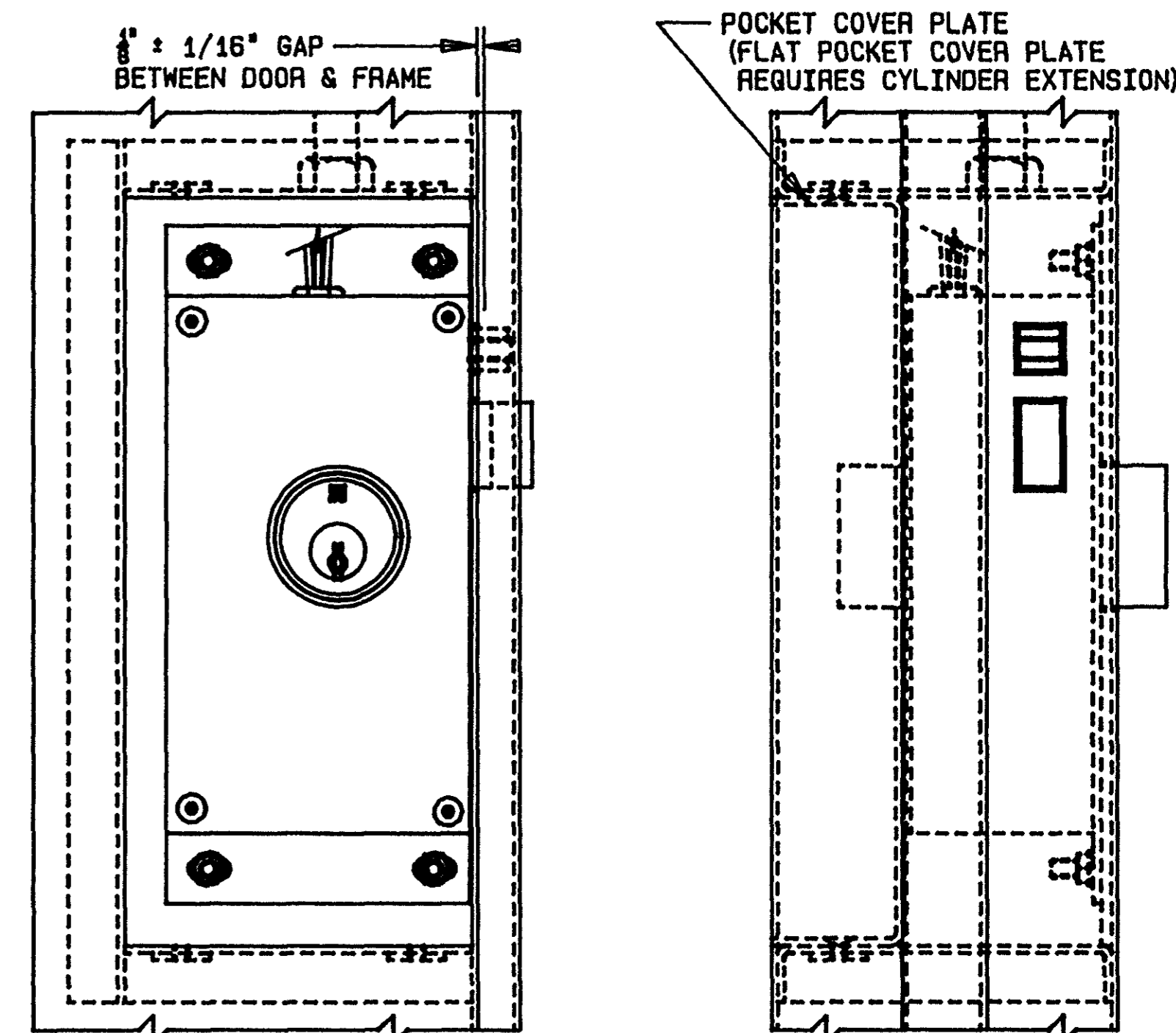
REFERENCE ONLY



FINAL INSTALLATION

LEFT HAND REVERSE BEVEL SHOWN

126 LOCK-KEYED TWO SIDES MOUNTING PLATE-COVER SIDE
ALLOW ACCESS FOR PROPER KEY OPERATION



DOOR & FRAME PREPARATION TOLERANCES UNLESS OTHERWISE SHOWN

FRACTIONS	± 1/32
TWO PLACE DECIMAL (.XX)	± .015
THREE PLACE DECIMAL (.XXX)	± .005
ANGLES	± 1/2°

SOUTHERN FOLGER DETENTION EQUIPMENT CO.
4634 S. Presa Street
San Antonio, Texas 78223
Phone: 210-533-1231 Fax: 210-533-2211
Security Hardware & Detention Equipment

THIS DRAWING IS THE EXCLUSIVE PROPERTY OF THE SOUTHERN FOLGER DETENTION EQUIPMENT CO. NEITHER USE WHATSOEVER OF THE INFORMATION CONTAINED HEREON, NOR REPRODUCTION IN WHOLE OR IN PART, MAY BE MADE WITHOUT OUR EXPRESSED WRITTEN PERMISSION. THIS DRAWING REMAINS THE PROPERTY OF SOUTHERN FOLGER DETENTION EQUIPMENT CO. AND MUST BE RETURNED ON DEMAND.

DO NOT SCALE - ALL DIMENSIONS IN INCHES. DIMENSIONS SUBJECT TO CHANGE WITHOUT NOTICE. REFER TO CATALOG FOR STANDARD AND OPTIONAL FEATURES. DOOR AND FRAME MANUFACTURERS ARE RESPONSIBLE FOR PROVIDING ADEQUATE CONSTRUCTION OR REINFORCEMENTS FOR PROPER INSTALLATION OF HARDWARE SHOWN. TOLERANCES SHOWN ARE FOR CUTOUTS.

CAD FILE NO. C-16 D-10

DRAWN BY R. WEISSENSEL DATE 1-24-90
CHECKED BY D. KIEFNER APP. BY R. STEFANEK

DRAWING TITLE
126 SERIES DEADLATCH - "HM" STOP SIDE MTG. MODELS 126 E, M, MI, MC

REPLACES OLD DRAWING NO.

DRAWING NO. 092-0230-017

LTR.	REVISION	E. C. O.	BY	APP.	DATE
A	NEW DWG. & P.N. RELEASE	230-0116	RW	RS	1-24-90
B	ADD MAXI MOGUL DIM.	230-0121	SAH		4-10-90
E	CORRECTED DESIGNATION OF DOOR STRIKE PREPARATION	230-0134	MC		7-16-90
D	ADD NOTE/STRIKE PREP DIMS FROM HINGE SIDE	230-0192	PB	RS	2-6-92
E	MOVED WIRE ACCESS HOLE, REVISED CYL CHART	230-0211	BK	RS	9-9-92
F	ADDED NOTE, 1 3/8" WAS DIM A	230-0231	BK	RS	1-22-93

NOTES:

1. FOUR 5/16-18 HEX HEAD SCREWS, NUTS, FLATWASHERS AND EXTERNAL TOOTH LOCKWASHERS SUPPLIED WITH EVERY LOCK.
2. FOR OPTIONAL CYLINDER EXTENSION SEE DRAWING 092-0230-014.
3. MOGUL CYL'S ARE RECESSED 1/4" IN THE CYL COLLAR. BUILDERS HARDWARE CYL'S ARE RECESSED 3/4" IN THE CYL COLLAR. MAXI-MOGUL CYL'S ARE FLUSH WITH CYL COLLAR.