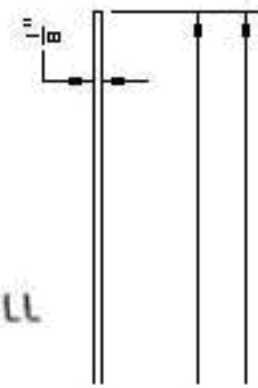
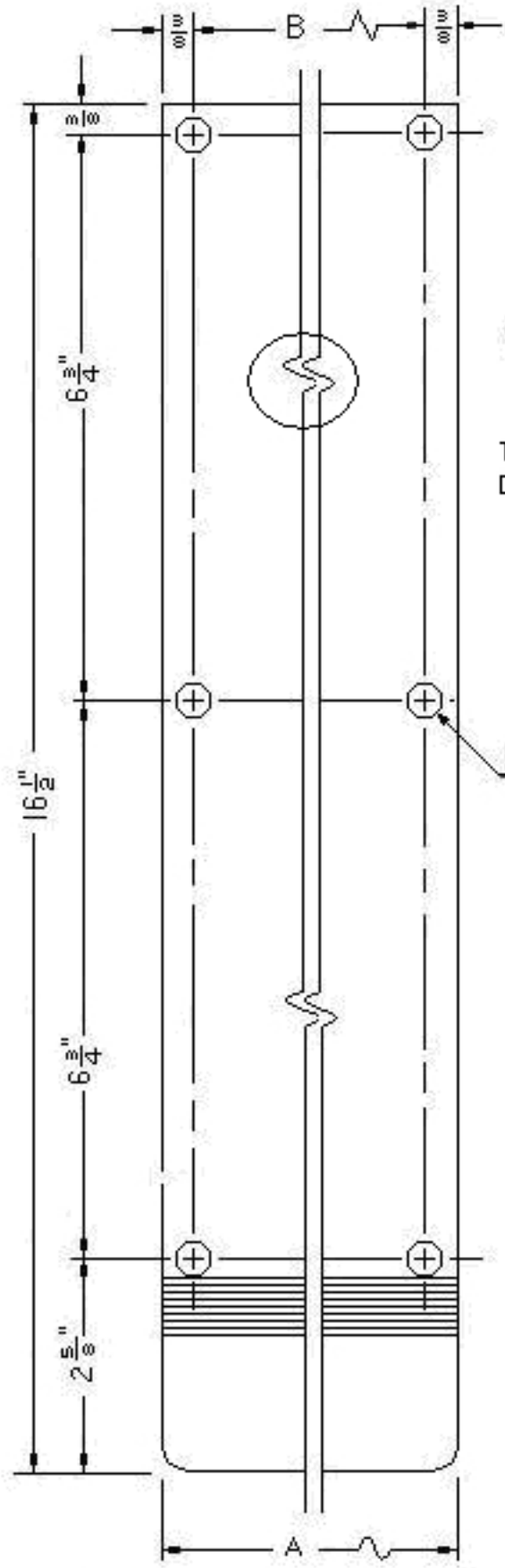


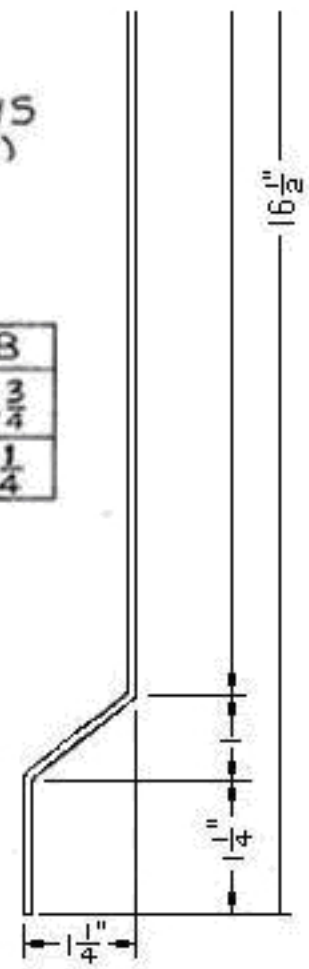
A REVISED 12-21-86
 B REVISED : 4-5-95



NOTES:
 1. DO NOT PREDRILL DOOR.
 TROU AU MIEU DU DEBUT AU MILIEU
 DIAMETRE 1 1/4

NO 8X1 OHPHWS
 (5/16" DIA., C3NK)

TRIMCO #/U	A	B
1820	3 1/2	2 3/4
1820-11	8"	7 1/4



DWG. NO. 11516

Trimco / BBW
 Trimco Brass Manufacturing Company, Inc.
 3528 Emery Street, P.O. Box 23277
 Los Angeles, CA 90023, USA

1820, 1820-11
 PUSH AND PULL PLATE
 DR. BY: L.R.