

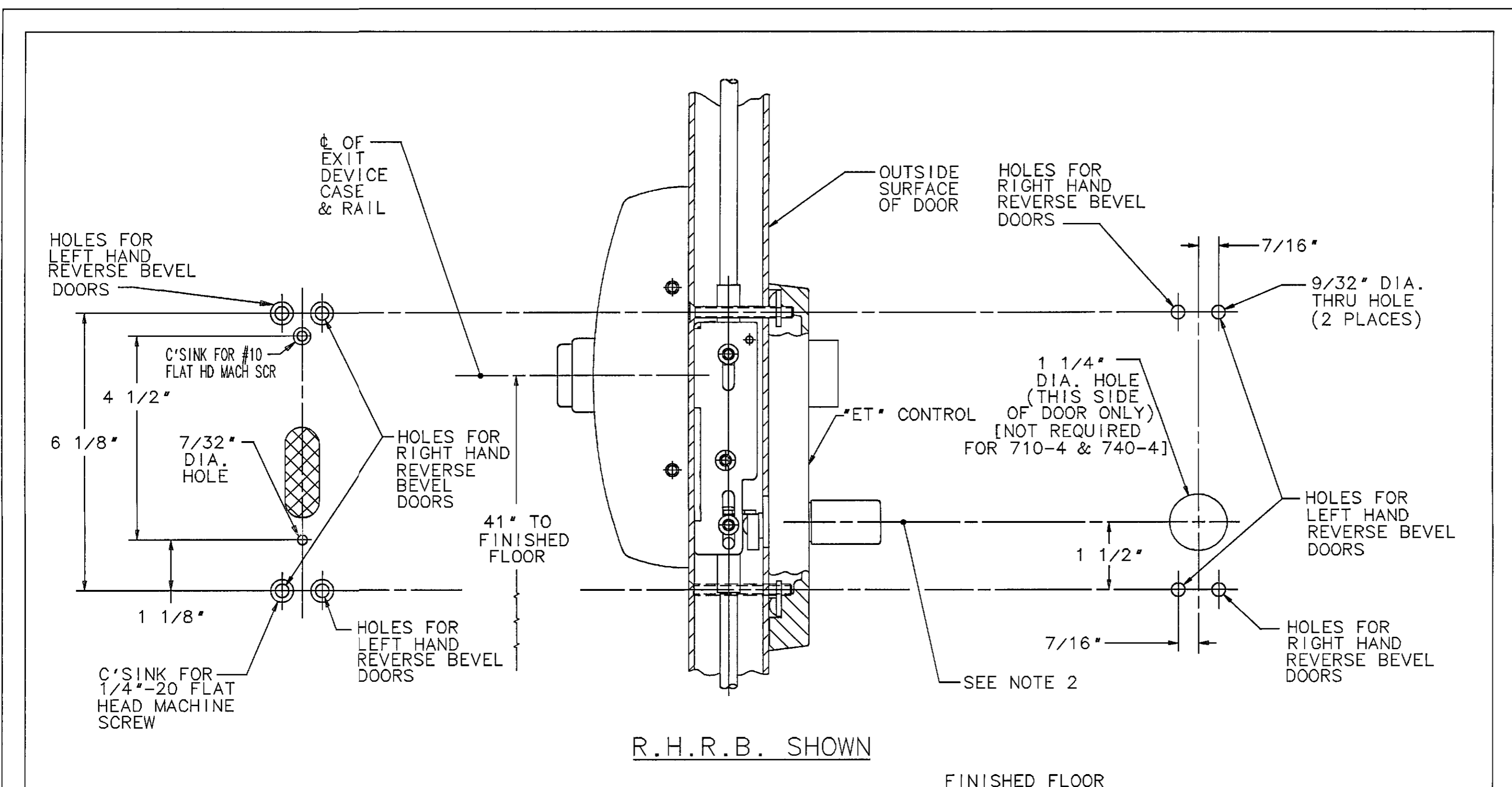
4

3

2

1

REVISION HISTORY				
ZONE	REV	DESCRIPTION	NAME/DATE	APPD/DATE
	F	PER PCP #03-0203	DTS	DJP
C2	F1	ADDED 710-4 NOTE	4-30-03	
	G	PER PCP 04-0410 PICTURE CHANGE		08/17/04
	G1	ADD NOTE 3		12-22-04



← TRIM BORDER LINE

R.H.R.B. SHOWN

FINISHED FLOOR

- ③ — SEE TEMPLATE 4571 FOR ELECTROLYNX DETAILS WHEN NEEDED.
- ② — FOR REFERENCE PURPOSES ONLY:  $\phi$  OF LEVER HANDLE IS 37 11/16" FROM FINISHED FLOOR
- ① — FOR ADDITIONAL DOOR PREPARATIONS:  
 SEE INSIDE TRIM TEMPLATE #4312 FOR 8400 C.V.R.  
 SEE INSIDE TRIM TEMPLATE #4447 FOR 12-MD8400 C.V.R.  
 SEE INSIDE TRIM TEMPLATE #4445 FOR MD8600 & 12-MD8600 C.V.R.

SARGENT & COMPANY	NEW HAVEN, CONN. 06511
TEMPLATE: FOR 700-4 "ET" CONTROL FOR USE WITH MD8600, 12-MD8600 8400 AND 12-MD8400 CONCEALED VERTICAL ROD EXIT DEVICES	RELEASE DATE <b>DEC-22-04</b>
	TEMPLT NO. 4448 G

INTERPRET DIM AND TOL PER ASME Y14.5M - 1994			
UNLESS OTHERWISE SPECIFIED			
DIMENSIONS ARE IN INCHES	DRAWN BY/DATE DTS   4-30-03	<b>SARGENT<sup>®</sup> Manufacturing Company</b> 100 Sargent Drive New Haven, CT 06511	
TOLERANCE .XX±.01 .XXX±.005	CHECKED BY/DATE LM   4-30-03	ART. MD-8600 CONC. V.R. EXIT DEVICE	
ANGLES ±1°	PROCESS ENG/DATE Rmc   5-1-03	TITLE: TEMPLATE: FOR 700-4 "ET" CONTROL FOR USE WITH MD-8600 & 12-MD-8600 CONCEALED VERTICAL ROD EXIT DEVICES	
FRACTIONS ±1/64	FNL APPROVAL/DATE DJP   6-26-03	SIZE C	DWG No. 4448
<b>CONFIDENTIAL</b> THIS DOCUMENT IS THE CONFIDENTIAL PROPERTY OF SARGENT MANUFACTURING AND IS NOT TO BE REPRODUCED, USED OR DISCLOSED BY ANYONE WITHOUT THE EXPRESS WRITTEN PERMISSION OF SARGENT MANUFACTURING COMPANY.	PROD CTRL/FNL REL LB   7-1-03	REV G	SHEET: 1:1

D

C

B

A

D

C

REV G

SHT 1

4448

DWG No.

4

3

2

1