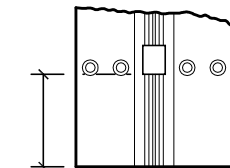


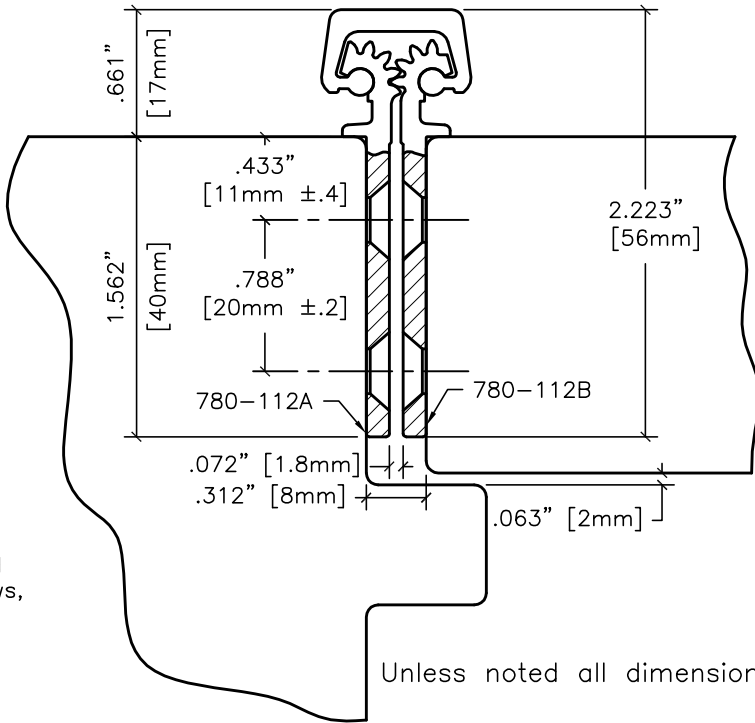
#12 x 82" F.H. countersunk wood or machine screws, (38 places).

32 bearings spaced equally @ 2.563" center to center.

2.406" [61.1mm] Ref.



End of hinge to first bearing, both ends.



Unless noted all dimensions  $\pm .020"$   $\pm .5mm$

### Vertical Hole Spacing

Non cumulative tolerances on hole to hole spacing.

	Metric (mm)	Decimal (in.)
A	2159.0 $\pm .000$	85.000 $\pm .000$
B	65.5 $\pm .25$	2.579 $\pm .010$
C	85.0 $\pm .20$	3.346 $\pm .008$
D	130.0 $\pm .20$	5.118 $\pm .008$
E	200.0 $\pm .20$	7.874 $\pm .008$
F	257.0 $\pm .20$	10.118 $\pm .008$

	<b>HAGER COMPANIES</b> HIGHWAY 78 WEST P.O. BOX 3368 OXFORD, ALABAMA 36203		
	<b>780-112 85" HD</b>		
DATE 10-25-96	REV. 01-15-02	DR. KBJ	SCALE None
FILENAME z:\roton\template\standard\780-112.dwg			
<b>DRAWING NO.</b>		<b>780112085HD</b>	