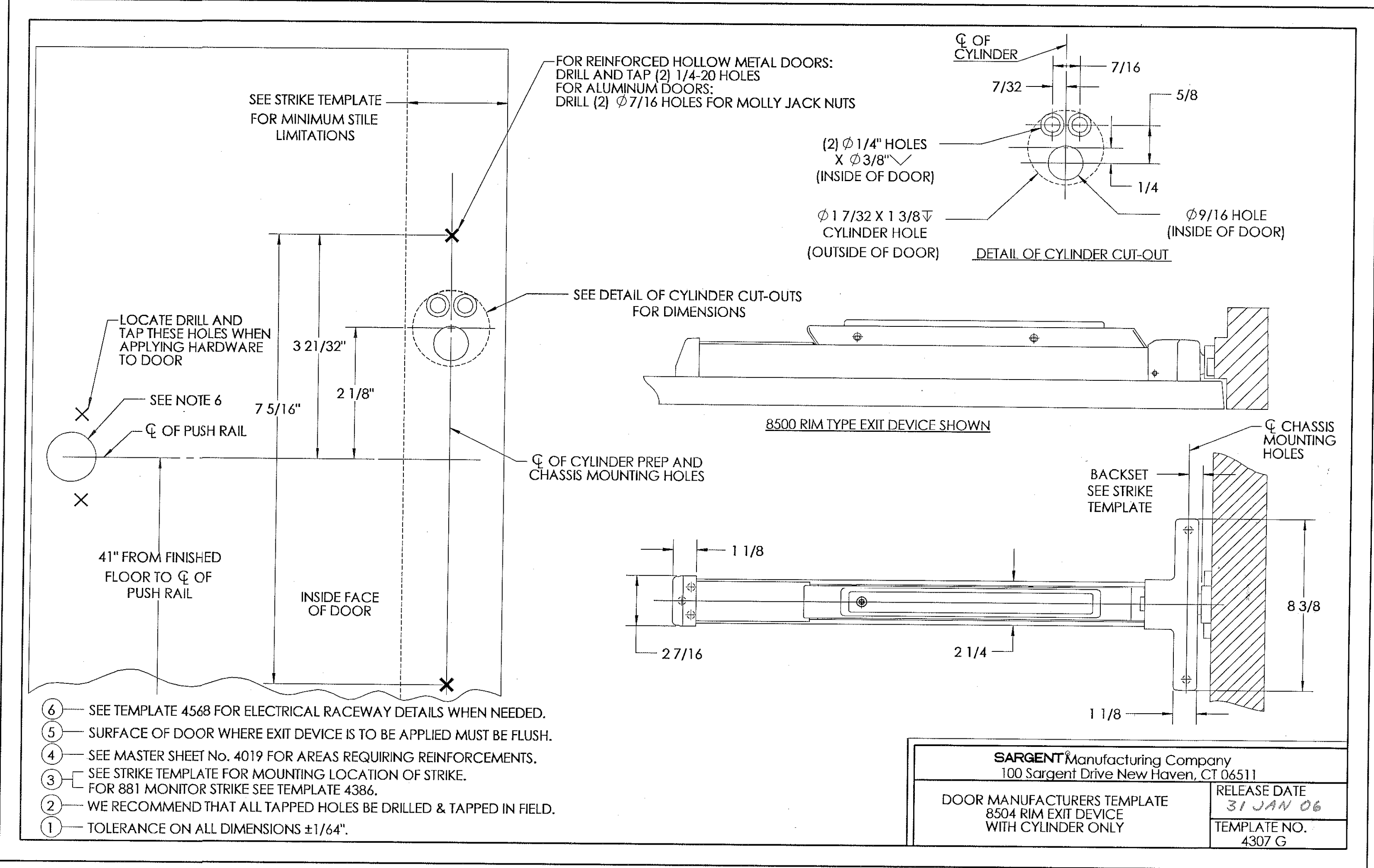


| REVISION HISTORY | | | | |
|------------------|------|--|-----------|--------------------|
| ZONE | REV. | DESCRIPTION | NAME/DATE | APPD/DATE |
| | G | REDRAWN WITH CHANGE PER PCP 04-382 ADDED NOTE 6 | 8/13/2004 | <i>CSA</i> 1/30/06 |



| | | | |
|---|------------------------|--|---|
| INTERPRET DRAWING PER ANSI Y14.5M -1994 | | DRAWN BY/DATE <i>CSA</i> 1/12/06 | SARGENT SARGENT Manufacturing Company 100 Sargent Drive New Haven, CT 06511 |
| UNLESS OTHERWISE SPECIFIED ALL DIMENSIONS ARE IN INCHES. | | CHECKED BY/DATE <i>L.P.T.</i> 1-31-06 | |
| TOLERANCE | .XX ±.01 .XXX ±.005 | MFG ENG/DATE | ART: EXIT DEVICE TEMPLATES |
| ANGLE | ±1° | FNL APPROVAL/DATE <i>CSA</i> 1/30/06 | TITLE: DOOR MANUFACTURERS TEMPLATE 8504 RIM EXIT DEVICE WITH CYLINDER ONLY |
| FRACTION | ±1/64 | FNL APPROVAL/DATE | SIZE DWG No. 4307 |
| CONFIDENTIAL | | PROD CTRL/FNL REL <i>CSA</i> 1/31/06 | REV G |
| THIS DOCUMENT IS THE CONFIDENTIAL PROPERTY OF SARGENT MANUFACTURING AND IS NOT TO BE REPRODUCED, USED OR DISCLOSED BY ANYONE WITHOUT THE EXPRESS WRITTEN PERMISSION OF THE SARGENT MANUFACTURING COMPANY. | | SCALE: 1:1 | SHEET: 1 of 1 |