

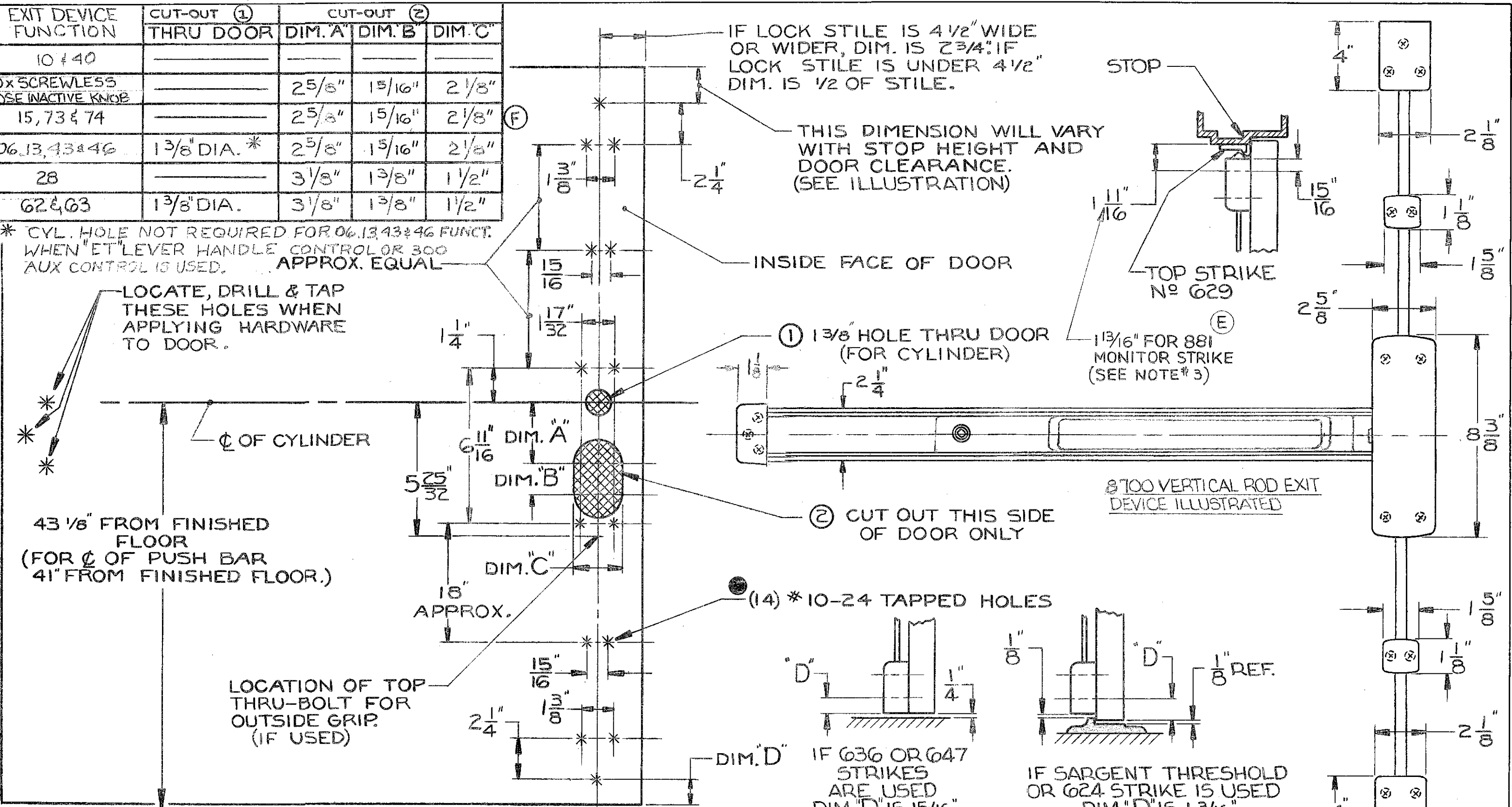
EXIT DEVICE FUNCTION	CUT-OUT (1)		CUT-OUT (2)	
	THRU DOOR	DIM. "A"	DIM. "B"	DIM. "C"
10 & 40	—	—	—	—
10x SCREWLESS ROSE INACTIVE KNOB	—	25/8"	15/16"	2 1/8"
15, 73 & 74	—	25/8"	15/16"	2 1/8"
06, 13, 43 & 46	1 3/8" DIA. *	25/8"	15/16"	2 1/8"
28	—	3 1/8"	1 3/8"	1 1/2"
62 & 63	1 3/8" DIA.	3 1/8"	1 3/8"	1 1/2"

* CYL. HOLE NOT REQUIRED FOR 06, 13, 43 & 46 FUNCT. WHEN "ET" LEVER HANDLE CONTROL OR 300 AUX CONTROL IS USED. APPROX. EQUAL

LOCATE, DRILL & TAP THESE HOLES WHEN APPLYING HARDWARE TO DOOR.

43 1/8" FROM FINISHED FLOOR (FOR C OF PUSH BAR 41" FROM FINISHED FLOOR.)

LOCATION OF TOP THRU-BOLT FOR OUTSIDE GRIP. (IF USED)



- ⑥ — FOR GLASS BEADED DOORS, IF GLASS BEAD CANNOT BE REMOVED, USE GLASS BEAD SHIM KIT (AVAILABLE ON ORDER).
- ⑤ — SURFACE OF DOOR WHERE EXIT DEVICE IS TO BE APPLIED, MUST BE FLUSH.
- ④ — SEE MASTER SHEET N° 4019 FOR AREAS REQUIRING REINFORCEMENTS.
- ③ — SEE STRIKE TEMPLATE N° 4009 FOR 629 (TOP) AND 624, 636 & 647 (BOTTOM) STRIKES. FOR 881 MONITOR STRIKE SEE TEMPLATE 4387.
- ② — WE RECOMMEND THAT ALL TAPPED HOLES BE DRILLED AND TAPPED IN FIELD.
- ① — TOLERANCE ON ALL DIMENSIONS ± 1/64.

SARGENT & COMPANY		NEW HAVEN, CONN. 06509	
TEMPLATE: FOR 8700 VERTICAL ROD EXIT DEVICE		RELEASE DATE	25 JAN 99
		TEMPLET NO.	4289H