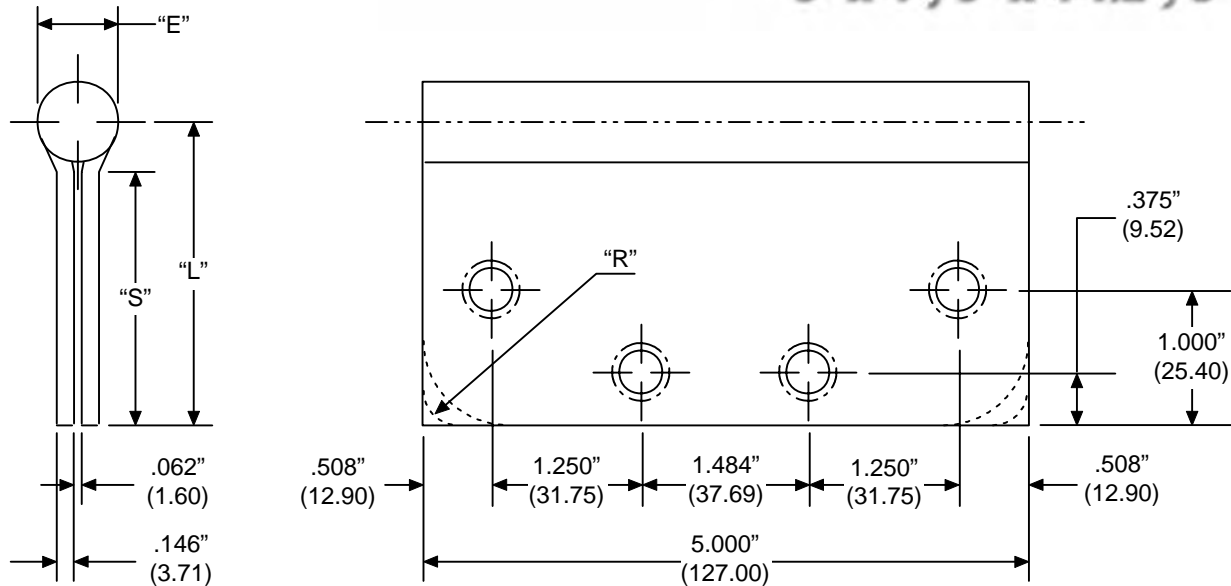




FULL MORTISE STANDARD WEIGHT TEMPLATE

BB - PB - CB - CP - FB
5" x 4", 5" x 4-1/2", 5" x 5"



Part Number			Gauge of Metal	"E" Outside Dia.	"L" Leaf Width	"S" Swage Line	"R" Corner Radius
Steel	Brass	Stainless					
BB81/CB81	BB21/CB21	BB51/CB51	.146"	.624"	2.00"	1.62"	Square, 1/4", 5/8"
BB81/CB81	BB21/CB21	BB51/CB51	.146"	.624"	2.25"	1.87"	Square, 1/4", 5/8"
BB81/CB81	BB21/CB21	BB51/CB51	.146"	.624"	2.50"	2.12"	Square, 1/4", 5/8"
PB81/CP81	PB21/CP21	PB51/CP51	.146"	.624"	2.00"	1.62"	Square, 1/4", 5/8"
PB81/CP81	PB21/CP21	PB51/CP51	.146"	.624"	2.25"	1.87"	Square, 1/4", 5/8"
PB81/CP81	PB21/CP21	PB51/CP51	.146"	.624"	2.50"	2.12"	Square, 1/4", 5/8"

NOTE:

- 1 screw pack includes all machine screws (24), and 1/2 wood screws (12). ATMS & AWS also available.
- Screw size: FHMS - 12-24 x 1/2"
FHWS - 12 x 1-1/4"
- All hinges are ANSI template.

Template: BB50