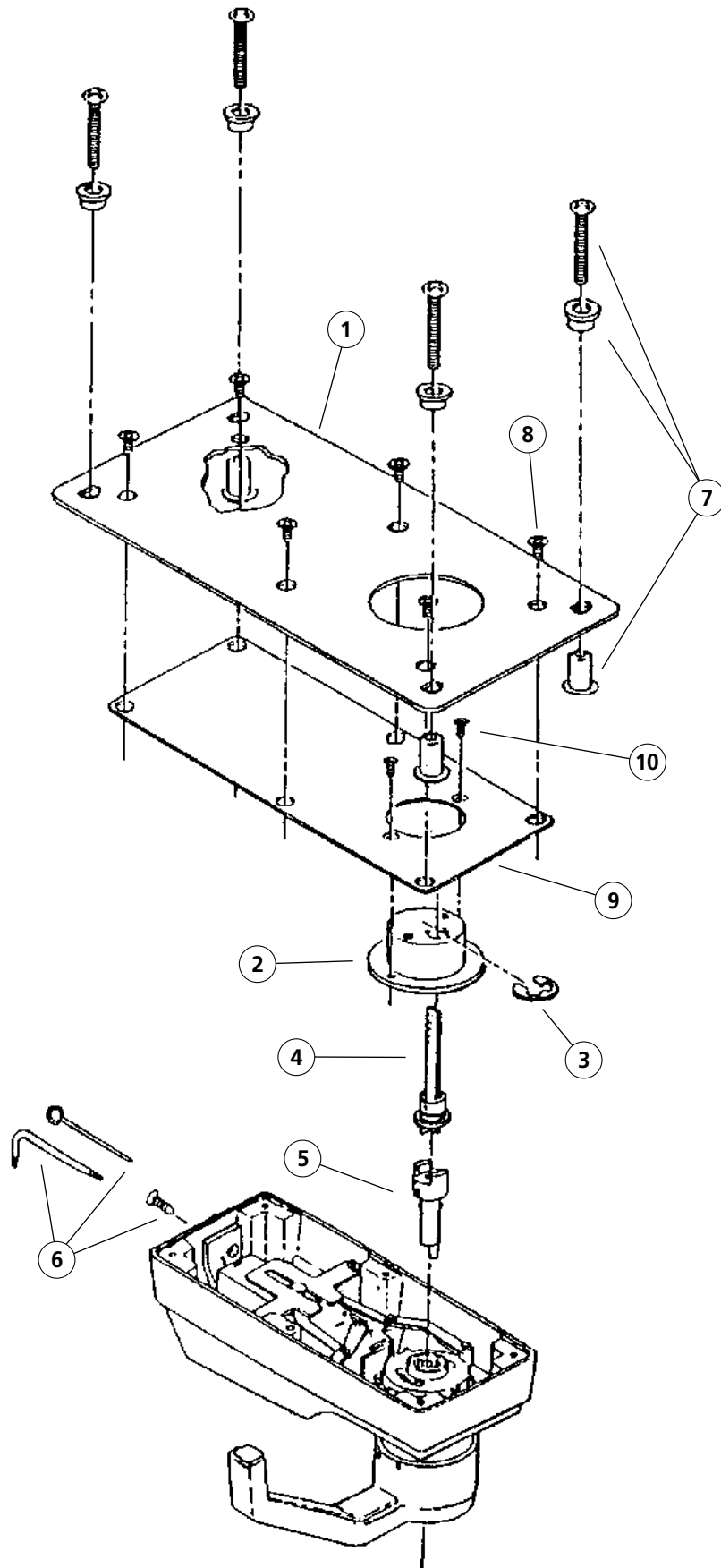


Exit Device Controls

LP1000 Series Exploded View

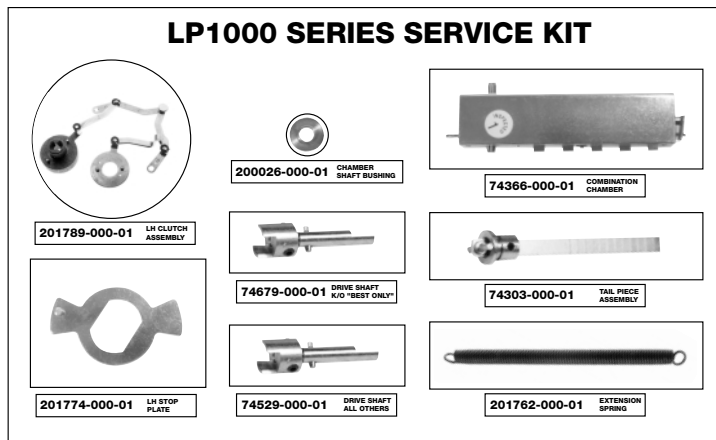


NEW

LP1000 Series Service Kit

Parts Included in Kit

- Chamber Shaft Bushing
- Clutch Assembly
- Combination Chamber
- Extension Spring
- Key Override Shaft (Best)
- Key Override Shaft (all others)
- Stop Plate
- Tailpiece Assembly




Left Hand Kit Shown

Left Hand: 203040-000-01

Right Hand: 203039-000-01

Exploded View Drawing on page 26

<p>1</p> 	<p>Mounting Plate 24355-012-01 (Black only)</p>
<p>2</p> 	<p>Lock Adaptor 44247-000-01</p>
<p>3</p> 	<p>E - Ring (For Security Tailpiece Assembly) 54198-000-05</p>
<p>4</p> 	<p>Tail Piece Assembly 74303-000-01</p>
<p>5</p> 	<p>Drive Shaft Assembly (Short) (For all Key Override cores except Best and equivalent) 74529-000-01 Drive Shaft Assembly (Long) (For Best Key Override and equivalent) 74679-000-01</p>

<p>6</p> 	<p>Combination Change Kit 74543-26D-01</p>
<p>7</p> 	<p>Thru-Bolt Screw Kit 74544-26D-01</p>
<p>8</p> 	<p>Back Plate Screw (Phillips 6-32 x 3/8" F.H.M.S.) (Replaced 201444-022-10) 201955-000-10</p>
<p>9</p> 	<p>Back Plate (Replaced 24354-000-01) 204043-000-01</p>
<p>10</p> 	<p>Lock Adaptor Screw 204112-000-05</p>

• See L1000 Series for all parts not listed here