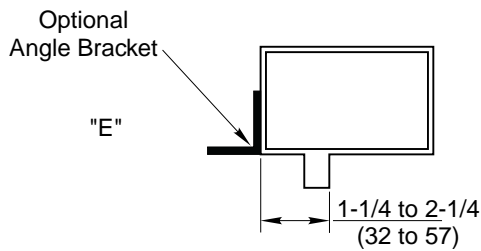
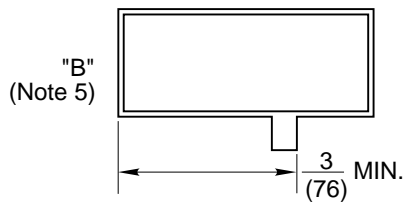
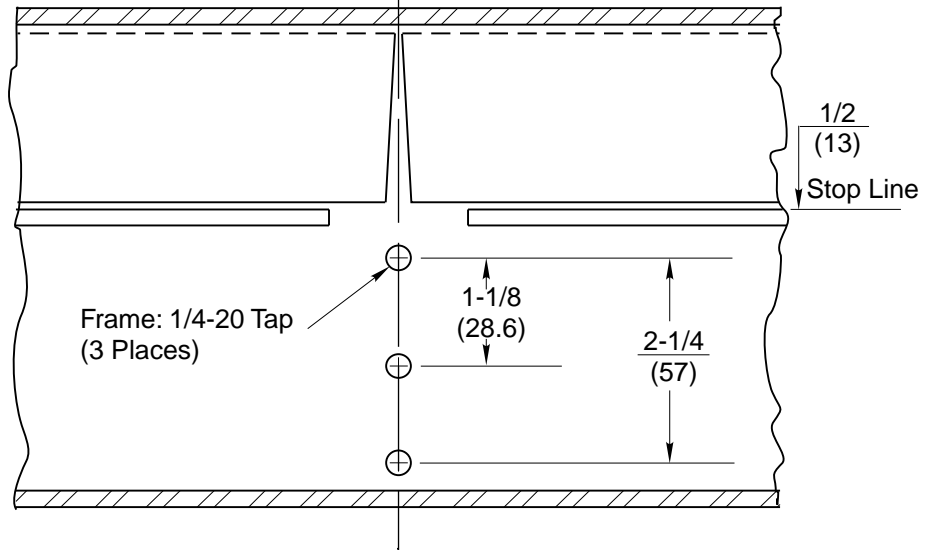


View X-X (Typical Soffit and Floor Prep)

Notes:

1. Do not scale drawing. Dimensions are in inches(mm).
2. M300 Mullion is made from 1-1/4 x 3 (31.8 x 76.2) aluminum extrusion.
3. Mullion has built-in strike for 7200 exit devices. Locate device from mullion face as shown on template 7472-0300, at installation.
4. Prepare mounting holes when installing the mullion.
5. Doors and frames should provide solid engagement to not less than (3) full screw threads.



**M300 Mullion
Frame Preparation**

Yale

Yale Commercial Locks and Hardware

www.yalecommercial.com

TEMPLATE NUMBER

7400-0300

DATE

4-01